



Stronger  
Safer  
**Smarter!**



# Meeting the Toughest Demands

**ZND is the global market leader in the manufacturing and supply of high-quality temporary fencing, pedestrian barriers, and accessories.**

Established in 1965 as a wire drawing business, ZND has since pioneered many manufacturing practices related to fencing and barrier solutions — making us one of the fastest growing temporary fence manufacturers in the world.

Our designs have direct and immediate benefits for our customers. ZND is unique through superior design, engineering, automation, and world-class service. Our products have been engineered to be compatible with current products available in the US to be easily integrated into a company's current fleet without disruption.

Temporary fencing is a necessity for our customers in the construction and event management industries. Our solution-based systems are stronger, safer, and smarter. Through superior design, engineering, and automation, ZND's welded wire mesh — using our SmartWeld process — means customers have a superior alternative to chain link.



**ZND**



As the market leader throughout Europe, ZND saw opportunity to expand into the U.S. market and bring ZND innovative solutions forward to help address customers' pain points. One of them being lead time for fencing being manufactured overseas. Investing in the U.S. was how we could best serve customers and address this pain point immediately. Located in Statesville, North Carolina, our first facility started production in 2020. Our second facility in Madera, California, entered operation and production in early 2022.





## Temporary Fencing

ST612

---

ST812

---

RT612

---

RT812

---

**Temporary fencing has proven to be extremely popular with our customers in the construction and event management industries for use to direct the public away from construction hazards and towards secure areas.**

Since 1997 the ZND group have specialized in the manufacturing and continual development of SmartWeld™ temporary fencing, creating a comprehensive range of panels, designed, and manufactured to a high standard.

All our temporary fencing panels are manufactured in our highly efficient, state of the art facilities here in the US and throughout Europe, where we produce over 70 different specifications and more than 10,000 fence panels a day.

We offer a wide variety of specification options with a choice of:

- Frame Styles
- Mesh Types
- Surface Finishes
- Corporate Identity Labels

Manufactured to the highest possible standards, made to order, and delivered directly to your site, you can be confident our comprehensive range of panels meet all site situations including local health and safety requirements.

We offer an extensive series of accessories to complement our panel systems including:

- Stabilizing Systems
- Standard and Lockable Fence Couplers
- Pedestrian and Vehicle Gates
- Height Extension Panels
- Privacy Screens



All our temporary fence panels can be powder coated in a color of your choice

### Load Data Guide

**Standard Load:** 280 panels/stands/couplers 8 (32 bundles) & 2 (12 bundles)

---

**Standard Load with Stillages:** 236 panels/stands/couplers & 7 stillages

---

**Panel Only Load:** 304 panels

---

# Fence Panel Styles

Our fence panels are split into two different series: the Square Top (**ST**) and The Round Top (**RT**).

Product Style	Mesh Type	Options
ST612	Standard	V, H, VH
RT812	Anticlimb	V, H, VH

## Step 1: Choose the Frame style

**ST**



**ST612**

Horizontal Tube Diameter: 1.375"

Vertical Tube Diameter: 1.375"

**ST812**

Horizontal Tube Diameter: 1.375"

Vertical Tube Diameter: 1.375"

**RT**



**RT612**

Horizontal Tube Diameter: 1.375"

Vertical Tube Diameter: 1.375"

**RT812:**

Horizontal Tube Diameter: 1.375"

Vertical Tube Diameter: 1.375"

## Step 2: Choose the Mesh style

**Standard**

Vertical Pitch: 2.03"

Vertical Wire Diameter: 0.126"

Horizontal Pitch: 7.66" (6ft panel)

8.44" (8ft panel)

Horizontal Wire Diameter: 0.126"



**Anticlimb**

Vertical Pitch: 1.22"

Vertical Wire Diameter: 0.087"

Horizontal Pitch: 7.66" (6ft panel)

8.44" (8ft panel)

Horizontal Wire Diameter: 0.126"



## Step 3: Choose the Support Tube Style

These options can add either a vertical or horizontal tube or both vertical and horizontal tube into the center of the panel.



**V**



**H**



**VH**

# ST612

Our ST612 panel has vertical and/or horizontal tube diameters of 1-3/8" (1.375") and is available with Standard or Anticlimb mesh. Corner plates are standard on all panels.



Illustration shows ST612VH Standard panels

Panel Name	Stock Code	Dimension (Feet and inches)	Weight (Lbs)	Finish
ST612 Standard	07072205	12'-0" x 6'	49	Pre-Galvanized
ST612V Standard	07072215	12'-0" x 6'	53	Pre-Galvanized
ST612H Standard	07072225	12'-0" x 6'	57.6	Pre-Galvanized
ST612VH Standard	07072235	12'-0" x 6'	61.6	Pre-Galvanized
ST612 Anticlimb	07082205	12'-0" x 6'	45.3	Pre-Galvanized
ST612V Anticlimb	07082215	12'-0" x 6'	49.3	Pre-Galvanized
ST612H Anticlimb	07082225	12'-0" x 6'	53.9	Pre-Galvanized
ST612VH Anticlimb	07082235	12'-0" x 6'	57.9	Pre-Galvanized

# ST812

Our ST812 panel has vertical and/or horizontal tube diameters of 1-3/8" (1.375") and is available with Standard or Anticlimb mesh. Corner plates are standard on all panels.



Illustration shows ST812VH Standard panels

Panel Name	Stock Code	Dimension (Feet and inches)	Weight (Lbs)	Finish
ST812 Standard	07072405	12'-0" x 8'	58.9	Pre-Galvanized
ST812V Standard	07072415	12'-0" x 8'	64.4	Pre-Galvanized
ST812H Standard	07072425	12'-0" x 8'	67.5	Pre-Galvanized
ST812VH Standard	07072435	12'-0" x 8'	72.9	Pre-Galvanized
ST812 Anticlimb	07082405	12'-0" x 8'	53.8	Pre-Galvanized
ST812V Anticlimb	07082415	12'-0" x 8'	59.3	Pre-Galvanized
ST812H Anticlimb	07082425	12'-0" x 8'	62.4	Pre-Galvanized
ST812VH Anticlimb	07082435	12'-0" x 8'	67.8	Pre-Galvanized

# RT612

Our RT612 panel has vertical and/or horizontal tube diameters of 1-3/8" (1.375") and is available with Standard or Anticlimb mesh. Corner plates are standard on all panels.



Illustration shows RT612VH Standard panels

Panel Name	Stock Code	Dimension (Feet and inches)	Weight (Lbs)	Finish
RT612 Standard	07073205	12'-0" x 6'	48	Pre-Galvanized
RT612V Standard	07073215	12'-0" x 6'	52	Pre-Galvanized
RT612H Standard	07073225	12'-0" x 6'	56.6	Pre-Galvanized
RT612VH Standard	07073235	12'-0" x 6'	60.6	Pre-Galvanized
RT612 Anticlimb	07083205	12'-0" x 6'	44.3	Pre-Galvanized
RT612V Anticlimb	07083215	12'-0" x 6'	48.3	Pre-Galvanized
RT612H Anticlimb	07083225	12'-0" x 6'	52.9	Pre-Galvanized
RT612VH Anticlimb	07083235	12'-0" x 6'	56.9	Pre-Galvanized



# RT812

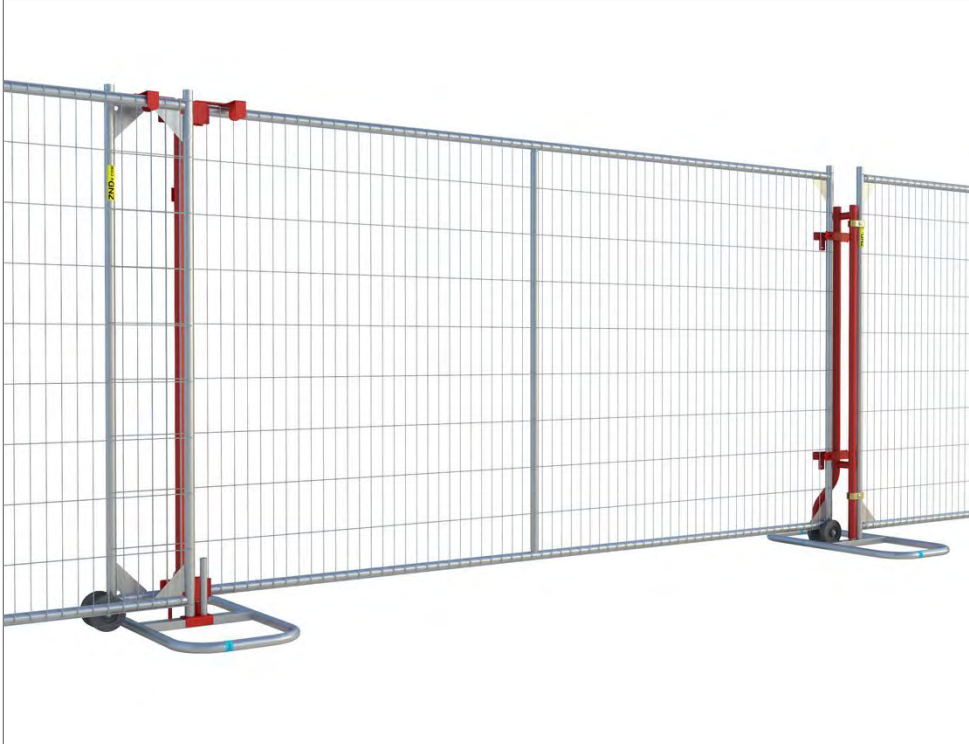
Our RT812 panel has vertical and/or horizontal tube diameters of 1-3/8" (1.375") and is available with Standard or Anticlimb mesh. Corner plates are standard on all panels.



Illustration shows RT812VH Standard panels

Panel Name	Stock Code	Dimension (Feet and inches)	Weight (Lbs)	Finish
RT812 Standard	07073405	12'-0" x 8'	57.8	Pre-Galvanized
RT812V Standard	07073415	12'-0" x 8'	63.4	Pre-Galvanized
RT812H Standard	07073425	12'-0" x 8'	66.4	Pre-Galvanized
RT812VH Standard	07073435	12'-0" x 8'	71.9	Pre-Galvanized
RT812 Anticlimb	07083405	12'-0" x 8'	52.8	Pre-Galvanized
RT812V Anticlimb	07083415	12'-0" x 8'	58.3	Pre-Galvanized
RT812H Anticlimb	07083425	12'-0" x 8'	61.4	Pre-Galvanized
RT812VH Anticlimb	07083435	12'-0" x 8'	66.8	Pre-Galvanized

**Gates: Pedestrian**



This kit contains everything you need to convert a panel into a sliding gate. Turn two panels into a double sliding gate.

Works with both 6ft and 8ft panels.

**Single Sliding Gate Kit**

Code: 08051541

Weight: 29.5 lbs

Finish: Pre-Galvanized, Powder Coated



This sturdy gate holds up to constant traffic entering and exiting a site. Its powder coated red, allowing the entrance/exit to be easily seen from a distance, and can be padlocked for extra security.

**Pedestrian Gate 6ft Anticlimb**

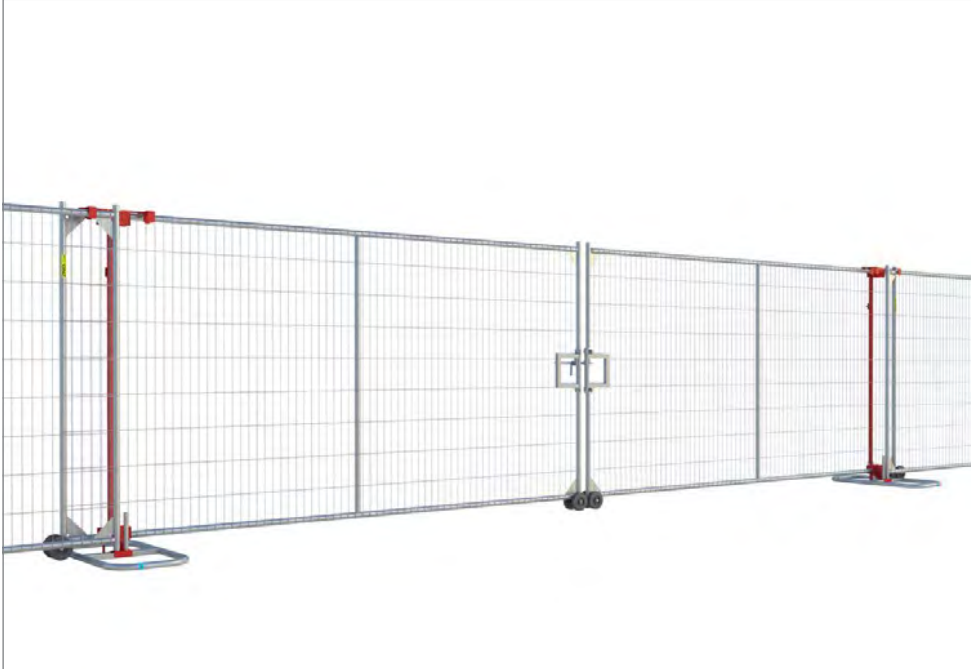
Code: 07551610

Dimension: 5'-1" x 7'-9.5"

Weight: 108 Lbs

Finish: Pre-Galvanized, Powder Coated

**Gates: Vehicle**



This kit contains everything you need to convert panels into a double sliding vehicle gate.

Works with both 6ft and 8ft panels.

**Double Sliding Gate Kit**

Code: 08051561

Weight: 34 lbs

Finish: Pre-Galvanized, Powder Coated



Any panel from ZNDUS can be converted into a set of vehicle gates.

**Accessory needed for conversion**

Gate Wheel Assembly (2 per kit)

Gate Latch Male Side (1 per kit)

Gate Latch Female Side (1 per kit)

Gate Hinge Coupler (4 per kit)

**Vehicle Gate Conversion Kit**

Code: 08052055

Weight: 125lbs\*

Finish: Galvanized



**Gate Hinge Coupler**

Code: 09054090



**Gate Wheel Assembly**

Code: 09053010



**Gate Latch Female Side**

Code: 09053045



**Gate Latch Male Side**

Code: 09053035



# Pedestrian Barriers

---

## Fixed Leg Barriers

---

## Bar Barriers

---

**Our pedestrian barriers are available in a range of different options, all designed to provide an effective boundary solution. With robust tubular steel frames and safety features to give you the quality and reliability you need.**

With fixed leg or detachable feet, and a high-quality galvanized appearance that can be colored to match your image, we offer plenty of options to ensure you're getting the right barrier for the job.

Our barriers have a strong tubular frame with vertical infill tubes.

Mig welding is used for extra strength and durability and a better long-term appearance.

Our fixed leg option welds the legs to the frame in an offset position and are re-enforced with a support brace. This makes the barriers ideal

for stacking and triangulates the front and rear footing adding strength and protection. A plastic insert is fitted into each leg to improve leg strength and protection.

All our barriers can be enhanced with a range of accessories such as company labels and advertising covers.



All our pedestrian barriers can be powder coated in a color of your choice

## Load Data Guide

**Standard Load - Fixed Leg Barriers:** 600 per load, Packs of 25

---

**Standard Load - Flat Foot Barriers:** 816 per load, Packs of 68

---

# Barrier Styles

Our barriers are split into two different series: Standard or Heavy Duty.

## Step 1: Choose the Barrier style

### Fixed Leg Barrier



**Fixed Leg** with non-scratch replaceable feet

#### Features



Hook and Eye



Leg Strengthening Bar



Name Plate For Company Logo



Swaged End Safety Foot

### Bar Barrier



**Flatfoot** with removeable flat bar feet

#### Features



Hook and Eye



Name Plate for Company Logo



Single Flat Foot

## Step 2: Choose Standard or Heavy Duty

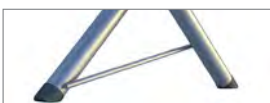
### Standard

- Lightweight
- Machine Welded (SmartWeld™)
- Pre-galvanized
- Round Design

### Heavy Duty

- Sturdy
- Hand-welded
- Hot Dipped Galvanized

## Step 3: Choose the Accessories



Heavy Duty Barrier Fixed Leg Insert



Name Plate For Company Logo



Double Flat Foot



Name Plate for Company Logo

Fixed Leg Barrier Standard



Illustration shows Fixed Leg Barrier Standard

Barrier Name	Stock Code	Dimension (Feet and Inches)	Frame Ø (Inch)	Infill (Inch)	Weight (Lbs)	Finish
Fixed Leg Barrier Standard	01063012	7'-5" x 3'-7.3"	1.5"	0.47" Diameter 4.4" Aperture	23.4	Pre-Galvanized



Hook and Eye



Leg Strengthening Bar



Name Plate for Company Logo



Swaged End Safety Foot

## Fixed Leg Barrier Heavy Duty



Illustration shows Fixed Leg Barrier Heavy Duty

Barrier Name	Stock Code	Dimensions (Feet and Inches)	Frame Ø (Inch)	Infill (Inch)	Weight (Lbs)	Finish
Fixed Leg Barrier Heavy Duty	1063201	7'-5.4" x 3'-7.3"	1.5" & 1.5"	0.47" Diameter 4.4" Aperture	34	Hot Dipped Galvanized



Hook and Eye



Name Plate for Company Logo



Heavy Duty Bar Barrier Fixed Leg Insert



Carry Handle

Bar Barrier Standard



Illustration shows Bar Barrier Standard

Barrier Name	Stock Code	Dimension (Feet and Inches)	Frame Ø (Inch)	Infill (Inch)	Weight (Lbs)	Finish
Bar Barrier Standard	01062012	7'-5" x 3'-7.3"	1.5"	0.47" Diameter 4.4" Aperture	20.3	Pre-Galvanized



Hook and Eye



Name Plate for Company Logo



Double Flat Foot



Single Flat Foot



**Bar Barrier Heavy Duty**



Illustration shows Bar Barrier Heavy Duty

Barrier Name	Stock Code	Dimensions (Feet and Inches)	Frame Ø (Inch)	Infill (Inch)	Weight (Lbs)	Finish
Bar Barrier Heavy Duty	01062201	7'-5.4" x 3'-7.3"	1.5" & 1.5"	0.47" Diameter 4.4" Aperture	38.6	Hot Dipped Galvanized



Hook and Eye



Name Plate for Corporate Logo



Single Flat Foot



Carry Handle



## Storage and Transport

**Stillages revolutionize the storage and transportation of stock, maximizing utility of space while also protecting inventory.**

Unlike traditional chain link, welded wire mesh panels do not become entangled when stored which, along with the robust frame, allows for ZND panels to be stored safely in dedicated stillages.

This fence panel stillage helps prevent the fence panels from getting damaged when not in use or when being transported, increasing the life of the panel.

Stillages can be stacked on top of one another, reducing the amount of storage space needed.

The riser posts are removable and can be stored within the stillage frame.

**Universal Fence Panel Stillage**

Code: 09055501

Dimensions: 12'-4.4" x 5'-1"

Weight: 540 Lbs

Finish: Hot Dipped Galvanized



This stillage can be used to carry both square top and round top fences panels

## Stillage

This barrier stillage helps prevent fixed leg or bar barriers from getting damaged when not in use or when being transported, increasing the life of the barriers.

Stillages can be stacked on top of one another, reducing the amount of storage space needed.

The riser posts are removable and can be stored within the stillage frame.

### Barrier Stillage 25 HDG

Code: 09055455

Dimensions: 5'-2" x 4'-9"

Weight: 150 Lbs

Finish: Hot Dipped Galvanized



This stillage can be used to carry both Bar Barriers and Fixed Leg Barriers

This stillage comes with 60 Z Blocks for transport and storage.

\*Not sold separately

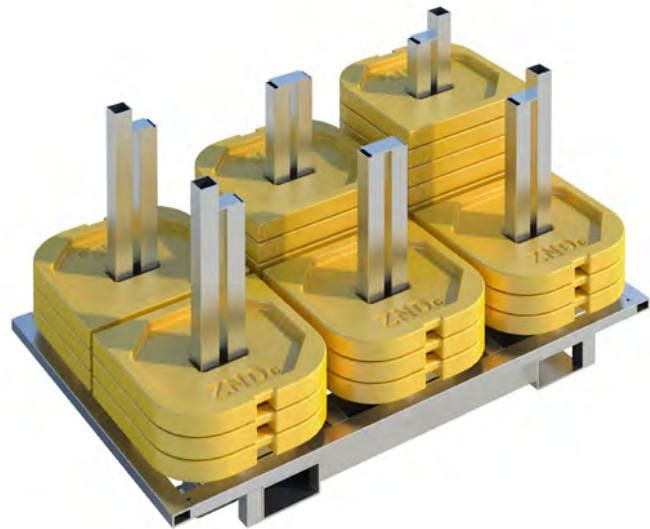
### Z Block Stillage

Code: 9057001

Dimensions: 4'-9" x 2'-10.25"

Weight: 283 Lbs

Finish: Hot Dipped, Galvanized





# Stabilizer Systems

**Thanks to our wide array of stabilizing systems, assembling a run of fence panels is now easy and straight forward.**

Designed and developed for use in a range of environmental conditions, sites, surfaces and locations, our Stabilizers help you maintain the highest standards of health and safety.

To ensure you get the correct stabilizing system for your fence we maintain a Customer Portal for our customers to access our assembly guides as well as detailed information as to the wind resistance of our stabilizing systems. We can also provide site specific advice and guidance.

## Stabilizer Systems



<b>Fence Stabilizer Assembly</b>	<b>Code: 09551520</b>
Fence Stabilizer	09551530
Tube Stand	13001001
Anti-Lift Bracket	09051040
Fence Coupler HD (Gripper)	08551320
Stabilizer Pin HD	09552230



<b>Fence Stabilizer with Brace Assembly</b>	<b>Code: 09551536</b>
Fence Stabilizer with Brace	09551538
Tube Stand	13001001
Anti-Lift Bracket	09051040
Fence Coupler HD (Gripper)	08551320
Stabilizer Pin HD	09552230

## Stabilizer Systems



**Windbreaker Standard Stabilizer Assembly** Code: 16554300

Windbreaker Stabilizer	16553115
Cinder Block Tray	16554101
Tube Stand	13001001
Anti-Lift Bracket	09051040
Fence Coupler HD (Gripper)	08551320



**Windbreaker Zero-Trip Stabilizer Assembly** Code: 16554200

Windbreaker Zero-Trip Stabilizer Base	16554201
Windbreaker Zero-Trip Stabilizer	16554205
Anti-Lift Bracket	09051040
Fence Coupler HD (Gripper)	08551320



**Windbreaker Plus Stabilizer Assembly** Code: 16554150

Windbreaker Plus Stabilizer	16554151
Cinder Block Tray	16554101
Tube Stand	13001001
Anti-Lift Bracket	09051040
Fence Coupler HD (Gripper)	08551320



**Windbreaker Elite Stabilizer Assembly** Code: 16553100

Windbreaker Zero - Trip Foot	16553101
Windbreaker Bottom Tube	16553105
Windbreaker Stabilizer	16553115
Windbreaker Cinder Block Tray	16553125
Anti-Lift Bracket	09051040
Fence Coupler HD (Gripper)	08551320

Cinder Blocks not included

# Improving Site Security

**A range of dedicated accessories provide work sites with more effective security than traditional temporary fence solutions.**

Welded wire mesh is a great security improvement over the traditional chain link mesh. In addition to the smaller gap making it harder to get a foot hold, the mesh is welded at every point of contact and at 144 points along the frame ensuring that broken wires do not compromise the integrity of the panel.



## Accessories

Our accessories are designed and rigorously tested to work in harmony with our fence and barrier products, including:

- Fence Feet
- Couplers
- Privacy Screen

Our accessories are designed to enhance our fence and barriers to make sure that they are safe but also secure.

We can also create customized accessories for all your needs. Please contact us for more information.

### Key to product categories

**F** Fence

**B** Barrier

**G** Gate

**S** Stabilizer

Accessories



S

**Tube Stand**

Code: 13001001

Dimensions: 3'-0" x 9.375"

Weight: 9.7 Lbs

Finish: Pre-Galvanized



S

**Anti-Lift Bracket**

Code: 09051040

Dimensions: 1.97" x 9.8"

Weight: 0.5 Lbs

Finish: Pre-Galvanized



S

**Fence Stabilizer**

Code: 09551530

Dimensions: 3'-2.9" x 4'-10.5"

Weight: 5.5 Lbs

Finish: Pre-Galvanized



S

**Fence Stabilizer with Brace**

Code: 09551538

Dimensions: 3'-2.9" x 4'-10.5"

Weight: 7.7 Lbs

Finish: Pre-Galvanized



S

**Zero-Trip Stabilizer Base**

Code: 16554201

Dimensions: 3'-4.4" x 2.8"

Weight: 10.8 Lbs

Finish: Electro Galvanized



S

**Zero-Trip Stabilizer**

Code: 16554205

Dimensions: 3'-1.9" x 5'-2.1"

Weight: 5.3 Lbs

Finish: Pre-Galvanized



S

**Windbreaker Zero-Trip Foot**

Code: 16553101

Dimensions: 4.7" x 3.2"

Weight: 3 Lbs

Finish: Electro-Galvanized



S

**Windbreaker Bottom Tube**

Code: 16553105

Dimensions: 5'-3" x 1.18"

Weight: 6 Lbs

Finish: Pre-Galvanized



S

**Windbreaker Cinder Block Tray**

Code: 16553125

Dimensions: 1'-7.7" x 3.1"

Weight: 6 Lbs

Finish: Electro-Galvanized



S

**Windbreaker Stabilizer**

Code: 16553115

Dimensions: 5'-0" x 5'-0"

Weight: 5.5 Lbs

Finish: Pre-Galvanized



S

**Windbreaker Plus Stabilizer**

Code: 16554151

Dimensions: 3'-3.4" x 4'-4"

Weight: 6.2 Lbs

Finish: Pre-Galvanized



S

**Cinder Block Tray**

Code: 16554101

Dimensions: 1'-8.1" x 1.8"

Weight: 5.7 Lbs

Finish: Electro Galvanized

Accessories



S

**Stabilizer Pin HD**

Code: 09552230

Dimensions: 3.5" x 1'-5.2"

Weight: 1 Lbs

Finish: Electro Galvanized



S

**Earth Anchor**

Code: 09552250

Dimensions: 2.6" x 1'-7.5"

Weight: 1.2 Lbs

Finish: Electro Galvanized



F

**Extension Panel Coupler HD (Gripper)**

Code: 8551340

Dimensions: 6.3" x 1.25" x 4.25"

Weight: 0.82 Lbs

Finish: Electro Galvanized



F

**Fence Coupler HD (Griplock)**

Code: 08551420

Dimensions: 3.86" x 1.25" x 2.75"

Weight: 0.54 Lbs

Finish: Electro Galvanized



F

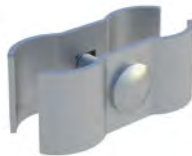
**Ring Coupler**

Code: 08551520

Dimensions: 5.16" x 2" x 2.87"

Weight: 0.84 Lbs

Finish: Electro Galvanized



F

**Fence Coupler Standard**

Code: 08551201

Dimensions: 3.4" x 1.375" x 2.4"

Weight: 0.37 Lbs

Finish: Carbon Steel Pre-Galvanized



F

**Fence Coupler HD (Gripper)**

Code: 08551320

Dimensions: 3.85" x 1.25" x 2.75"

Weight: 0.5 Lbs

Finish: Carbon Steel Grade S275



F

**Gate Hinge Coupler**

Code: 09054090

Dimensions: 3.85" x 1.57" x 2.95"

Weight: 0.73 Lbs

Finish: Carbon Steel Grade S275



F

**Coupler Spanner**

Code: 08551448

Dimensions: Ø 0.95" x 11.5"

Weight: 0.84 Lbs

Finish: Hard Chrome Gold



F

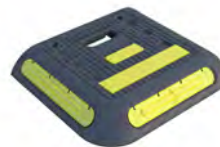
**Lockable Coupler Socket**

Code: 08551470

Dimensions: Ø 0.88" x 2.5"

Weight: 0.3 Lbs

Finish: Hard Chrome Gold



F

**Z-Weight**

Code: 12551115

Dimensions: 1'-7.5" x 3.07"

Weight: 27 Lbs

Finish: Self Colored



F

**Z-Block**

Code: 12551121


Dimensions: 16.9" x 6.5" x 18"

Weight: 25 Lbs minimum -  
28 Lbs maximum (Full)

Finish: Self Colored



Accessories




**F**  
**Leg Insert for Fixed Leg Barrier**  
 Code: 01063201-2  
 Dimensions: 1.58" X .98"  
 Weight: N/A  
 Finish: Self Colored



**B**  
**Double Flat Metal Foot Female**  
 Code: 13052530  
 Dimensions: 1'-11.4" x 4.8"  
 Weight: 4 Lbs  
 Finish: Pre-Galvanized



**B**  
**Flat Foot**  
 Code: 01062201-2  
 Dimensions: 1'-9" x 5.1"  
 Weight: 5 Lbs  
 Finish: Hot Dipped Galvanized



**F**  
**Panel Lifting Handle**  
 Code: 09052290  
 Dimensions: 6.1" x 3.45"  
 Weight: 1.3 Lbs  
 Finish: Powder Coated



**F**  
**Gate Wheel Assembly**  
 Code: 09053010  
 Dimensions: 1'-2.1" x 9.9"  
 Weight: 5.5 Lbs  
 Finish: Electro Galvanized



**F**  
**Slot Block**  
 Code: Red 12551533  
 Code: White 12551532  
 Dimensions: 11'-11.3" x 1'-11.6"  
 Weight: : 855 Lbs (full of water)  
 Finish: Self Colored  
 \*2 Slot Blocks required for each panel, sold separately



**F**  
**Reflective Fence Panel Strip PVC (12' Panel)**  
 Code: Red & White 02252005  
 Dimensions: 12'-0" x 6"  
 Weight: 1.1 Lbs  
 Finish: UV Printed PVC



**F**  
**Reflective Fence Panel Strip PVC (12' Panel)**  
 Code: Orange & White 02252001  
 Dimensions: 12'-0" x 6"  
 Weight: 1.1 Lbs  
 Finish: UV Printed PVC

Accessories



**F**  
**Gate Latch Male Side**  
 Code: 09053035  
 Dimensions: 9" x 11.4"  
 Weight: 4.6 Lbs  
 Finish: Pre-Galvanized



**F**  
**Gate Latch Female Side**  
 Code: 09053045  
 Dimensions: 9" x 11.4"  
 Weight: 3.3 Lbs  
 Finish: Pre-Galvanized



**F**  
**Fence Extension Panel**  
 Code: 09251540  
 Dimensions: 12'-0" x 2'-10.4"  
 Weight: 29.5 Lbs  
 Finish: Pre-Galvanized



**F**  
**Barbed Wire Extension Panel**  
 Code: 9251640  
 Dimensions: 5.66" x 1.34 x 0.05"  
 Weight: 2.2 Lbs  
 Finish: Pre-Galvanized



**F**  
**Barbed Wire Extension**  
 Code: 09052232  
 Dimensions: 3.85" x 1'8.9"  
 Weight: 3.3 Lbs  
 Finish: Electro Galvanized



**F**  
**Barbed Wire Extension Y Shape.**  
 Code: 09052237  
 Dimensions: 1'-8" x 1'-8.4"  
 Weight: 2.6 Lbs  
 Finish: Electro Galvanized



**F**  
**Cable Containment J Hook Foot**  
 Code: 09052260  
 Dimensions: 1'-8.3" x 10.6"  
 Weight: 4.2 Lbs  
 Finish: Pre-Galvanized



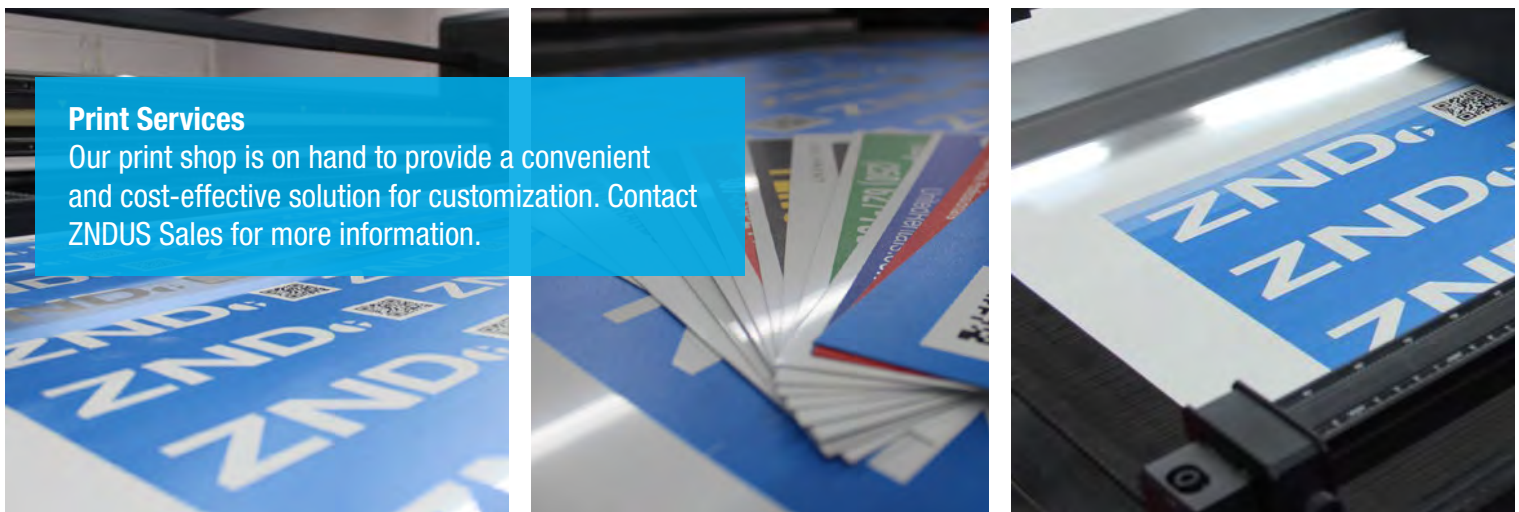
**F**  
**Cable Containment J Hook**  
 Code: 09052255  
 Dimensions: 1.2" x 5'-9.9"  
 Weight: 6.3 Lbs  
 Finish: Pre-Galvanized

**Accessories: Privacy Screen/Fence Cover**

Privacy Screen/Fence Cover		Weight (Lbs)	Size
0957001	Fence Cover Green 6'	7.8	5'-8" x 50'-0"
0957005	Fence Cover Black 6'	7.8	5'-8" x 50'-0"
0957011	Fence Cover Blue 6'	7.8	5'-8" x 50'-0"
0957015	Fence Cover Custom Printed	N/A	As requested
0957051	Fence Cover Green 8'	10.6	7'-8" x 50'-0"
0957055	Fence Cover Black 8'	10.6	7'-8" x 50'-0"
0957057	Fence Cover Blue 8'	10.6	7'-8" x 50'-0"
957059	Fence Cover 8' Custom Printed	N/A	As requested



Privacy screen can be used to catch debris on construction sites, as well as provide company branding, charged by the linear foot.



**Print Services**  
Our print shop is on hand to provide a convenient and cost-effective solution for customization. Contact ZNDUS Sales for more information.



# ZNDUS

ZND has a global reputation as the market leader in the manufacturing and supply of high-quality temporary fencing, pedestrian barriers, and accessories in the UK, Germany, France, Holland, Poland and most recently the United States.

We are at the forefront of innovation in manufacturing with continued investment in our machinery and processes to make our products the market leaders that our customers expect.

Please do not hesitate to contact us if you have any questions about our service or products.

**US Corporate Office  
and East Factory:**

**214 James Farm Rd  
Statesville, NC 28625**

Tel: 704-981-8660

Email: [sales@znd.com](mailto:sales@znd.com)

**US West Factory**

**2121 W Almond Ave  
Madera, CA 93637**

Tel: 559-613-1173

Email: [sales@znd.com](mailto:sales@znd.com)

[www.znd.com](http://www.znd.com)

Designed and produced in England by HMA. [www.hma.co.uk](http://www.hma.co.uk)