



Mercer Group, Inc
LIGHTING PRODUCTS GUIDE

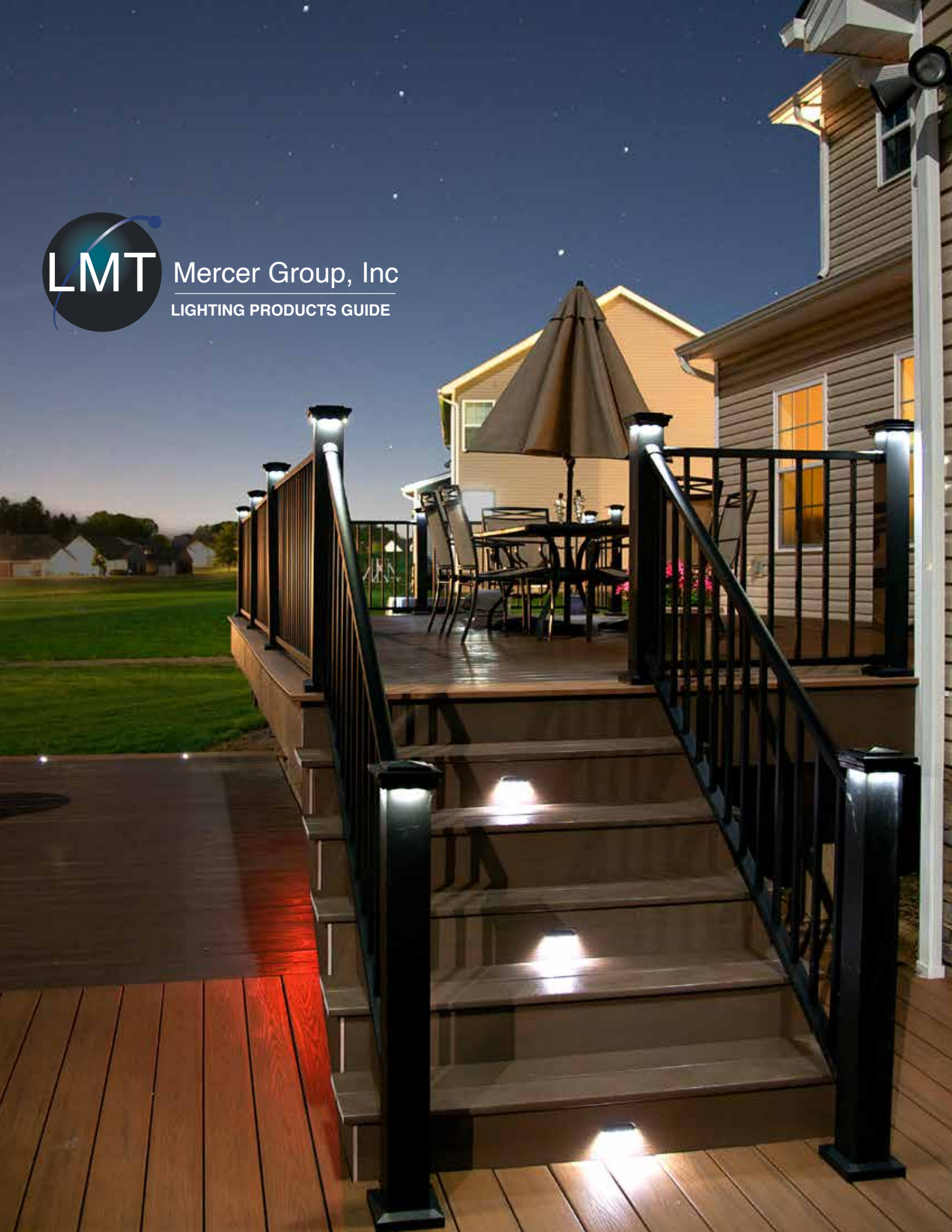


TABLE OF CONTENTS

Low Voltage Lighting

Ornamental Lighting	pg 3-6
Haven	pg 7-8
Cape May	pg 9-10
Neptune	pg 11-12
Accent Lighting	pg 13-18
Wiring & Accessories	pg 19-22

Solar Lighting

Ornamental Lighting	pg 23-28
Accent Lighting	pg 29-30
Cape May	pg 31-32
Neptune	pg 33-34
Solar Lighting	pg 35-36
Galaxy	pg 37-38
Wiring & Accessories	pg 39-40
About LMT	pg 41-42

]

AMBIANCE | SAFETY | SECURITY

Each year, LMT Mercer Group, Inc. adds more lighting options from which customers can choose. Lighting is one way customers can add a unique touch to their decks, fence or railing. We construct our lighting products with only high-grade, commercial components.







Our ornamental product line is the perfect accent to your property's deck and fencing. Offered in both low voltage and solar allows flexibility in installation and a variety of applications. With cap sizes from 2" through 5.5", our ornamental line is suited for most post sizes and our accent lights are ideal for stairs and discreet accent lighting on decks.

Ornamental Downward Low Voltage Post Cap Light



STANDARD COLORS



Draws 0.80 Watts, Available in 3000 & 5000 Kelvin
2"-4" 35 Lumens & 4.25"-5.5" 50 Lumens.

*Requires a LMT DC LED Low Voltage Power Supply and Harness.

SIZES OFFERED | 2", 2.5", 3", 3.25", 3.5", 4", 4.25", 4.5", 5", 5.5"

Ornamental Halo Low Voltage Post Cap Light



STANDARD COLORS



Draws 0.80 Watts, Available in 3000 & 5000 Kelvin
2"-4" 25 Lumens & 4.25"-5.5" 40 Lumens.

*Requires a LMT DC LED Low Voltage Power Supply and Harness.

SIZES OFFERED | 2", 2.5", 3", 3.25", 3.5", 4", 4.25", 4.5", 5", 5.5"







Our ornamental product line is the perfect accent to your property's deck and fencing. Offered in both low voltage and solar allows flexibility in installation and a variety of applications. With cap sizes from 2" through 5.5", our ornamental line is suited for most post sizes and our accent lights are ideal for stairs and discreet accent lighting on decks.

Ornamental Combo Low Voltage Post Cap Light



STANDARD COLORS

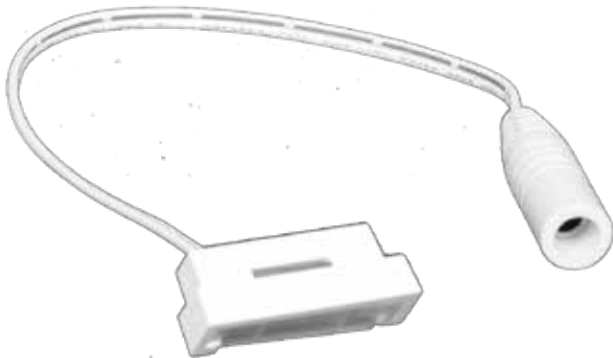


Draws 0.80 Watts, Available in 3000 & 5000 Kelvin
2"-4" 60 Lumens & 4.25"-5.5" 90 Lumens.

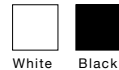
* Requires a LMT DC LED Low Voltage Power Supply and Harness.

SIZES OFFERED | 2", 2.5", 3", 3.25", 3.5", 4", 4.25", 4.5", 5", 5.5"

Ornamental Low Voltage Side Light



STANDARD COLORS



Dimensions: 1.50" x 0.63" x 0.39", 10" wire lead, End Connector: 0.5" Diameter, Contains: Fixture & (2ea.) Screws. Draws 0.40 Watt, Available in 3000 & 5000 Kelvin, 25 Lumens

* Requires a LMT DC LED Low Voltage Power Supply and Harness.





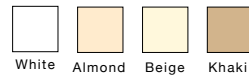
Our Haven line is offered in sizes from 3-5/8" through 6" and in four low voltage configurations. There are three lens choices and a downward version all offered in multiple color options.

Haven Low Voltage Post Cap

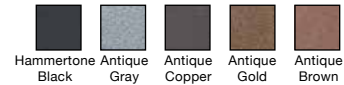


The Designer Finishes products allows for personal customizing of the post caps using accent colors and textured finishes. There are five Designer colors with textured finishes and four standard colors giving you numerous options to choose from.

STANDARD COLORS



DESIGNER FINISHES



SIZES OFFERED | 3-5/8", 4", 4-1/2", 5", 5-5/8", 6"

Haven Low Voltage: Draws 0.80 Watts, Available in 3000 & 5000 Kelvin, 22 Lumens. Haven Scalloped Low Voltage: Draws 0.80 Watts, Available in 3000 & 5000 Kelvin, 22 Lumens. Haven Halo Low Voltage: Draws 0.80 Watts, Available in 3000 & 5000 Kelvin, 22 Lumens. Haven Downward Low Voltage: Draws 0.80 Watts, Available in 3000 & 5000 Kelvin, 36 Lumens.

* Requires a LMT DC LED Low Voltage Power Supply and Harness.



Haven Halo Low Voltage Post Cap Light



Haven Scalloped Low Voltage Post Cap Light



Haven Downward Low Voltage Post Cap Light





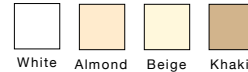
Our Cape May line is offered in sizes from 3-5/8" through 6" and in four low voltage configurations and five solar versions. There are three lens choices and a downward version in low voltage and two solar lens choices all offered in multiple color options.

Cape May Low Voltage Post Cap Light

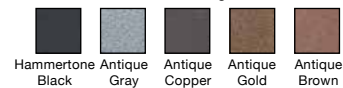
The Designer Finishes products allows for personal customizing of the post caps using accent colors and textured finishes. There are five Designer colors with textured finishes and four standard colors giving you numerous options to choose from.



STANDARD COLORS



DESIGNER FINISHES



SIZES OFFERED | 3-5/8", 4", 4-1/2", 5", 5-5/8", 6"

- Cape May Low Voltage: Draws 0.80 Watts, Available in 3000 & 5000 Kelvin, 22 Lumens.
- Cape May Scalloped Low Voltage: Draws 0.80 Watts, Available in 3000 & 5000 Kelvin, 22 Lumens.
- Cape May Halo Low Voltage: Draws 0.80 Watts, Available in 3000 & 5000 Kelvin, 22 Lumens.
- Cape May Downward Low Voltage: Draws 0.80 Watts, Available in 3000 & 5000 Kelvin, 36 Lumens.

* Requires a LMT DC LED Low Voltage Power Supply and Harness



Cape May Halo Low Voltage Post Cap Light



Cape May Downward Low Voltage Post Cap Light



Cape May Scalloped Low Voltage Post Cap Light





Our Neptune line is offered in sizes from 3-5/8" through 6" and in four low voltage configurations and five solar versions. There are three lens choices and a downward version in low voltage and two solar lens choices all offered in multiple color options.

Neptune Low Voltage Post Cap Light



The Designer Finishes products allows for personal customizing of the post caps using accent colors and textured finishes. There are five Designer colors with textured finishes and four standard colors giving you numerous options to choose from.

STANDARD COLORS
DESIGNER FINISHES



SIZES OFFERED | 3-5/8", 4", 4-1/2", 5", 5-5/8", 6"

Neptune Low Voltage: Draws 0.80 Watts, Available in 3000 & 5000 Kelvin, 22 Lumens.
 Neptune Scalloped Low Voltage: Draws 0.80 Watts, Available in 3000 & 5000 Kelvin, 22 Lumens.
 Neptune Halo Low Voltage: Draws 0.80 Watts, Available in 3000 & 5000 Kelvin, 22 Lumens.
 Neptune Downward Low Voltage: Draws 0.80 Watts, Available in 3000 & 5000 Kelvin, 36 Lumens.

* Requires a LMT DC LED Low Voltage Power Supply and Harness.



Neptune Halo Low Voltage Post Cap Light



Neptune Downward Low Voltage Post Cap Light



Neptune Scalloped Low Voltage Post Cap Light





Our accent lights are a perfect compliment to stair, under rail or flush deck lighting. These products offer improved safety and visibility, as well as look great in any outdoor living space. Our numerous color options ensure a great match to our other lighting lines.

Low Voltage Scalloped Dome Side Light & Dome Side Light



STANDARD COLORS
DESIGNER FINISHES



Diameter: 2.75", Height 1.344", (2) ea. LED w/ 9" lead wire. End Connector: 0.5" Diameter & (2) ea. screws, Draws 0.80 Watts, Available in 3000 & 5000 Kelvin, 30 Lumens.

* Requires a LMT DC LED Low Voltage Power Supply and Harness.

Low Voltage Stair/Side Light with 2 covers



STANDARD COLORS
DESIGNER FINISHES



Oval dimensions: 1.130" x 3.223", Contains: (1) ea. Lens w/ (3) ea. LED, (1) ea. Half Cover, (1) ea. Full Cover, & (2) ea. Screws, w/ 9" lead wire. End Connector: 0.5" Diameter for use on Stair and side post applications, Draws 0.40 Watts, Available in 3000 & 5000 Kelvin, 12 Lumens

* Requires a LMT DC LED Low Voltage Power Supply and Harness.

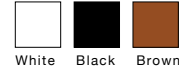


Our accent lights are a perfect compliment to stair, under rail or flush deck lighting. These products offer improved safety and visibility, as well as look great in any outdoor living space. Our numerous color options ensure a great match to our other lighting lines.

Flush Deck Light with Trim Ring



STANDARD COLORS



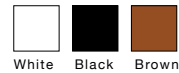
Product dimensions: Largest Diameter: 1.5", LED Diameter 1"; Overall Height (without wire): 0.8"; Hole Size Required 1.250", Package contents: (1) LED Light with Trim Ring, Wattage: 0.4 W, Lumens: 7, Wire lead length: 9" wire lead with connector

* Requires a LMT DC LED Low Voltage Power Supply and Harness. Available in 3000 & 5000 Kelvin.

Recessed Riser Light



STANDARD COLORS



Product dimensions: Largest Diameter: 1", LED Diameter 0.9"; Overall Height (without wire): 1.1"; Hole Size Required 0.750", Package contents: (1) LED Light with Trim Ring, Wattage: 0.4 W, Lumens: 12

* Requires a LMT DC LED Low Voltage Power Supply and Harness. Available in 3000 & 5000 Kelvin.

Flush Deck Light



STANDARD COLORS



Flush Mount Accent Light, Diameter: 0.995", Depth: 0.685", Contains: (1) ea. LED w/ 9" wire lead, End Connector: 0.5" Diameter, Draws 0.40 Watts, Available in 3000 & 5000 Kelvin, 7 Lumens

* Requires a LMT DC LED Low Voltage Power Supply and Harness

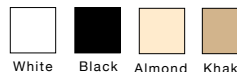


Our accent lights are a perfect compliment to stair, under rail or flush deck lighting. These products offer improved safety and visibility, as well as look great in any outdoor living space. Our numerous color options ensure a great match to our other lighting lines.

3" Under Rail Light



STANDARD COLORS



Dimensions: 2.97" x 0.52" x 0.35", Diameter, 10" wire lead, End Connector: 0.5" Diameter, Contains: Fixture & (2ea.) Screws. Draws 0.40 Watt, Available in 3000 & 5000 Kelvin, 10 Lumens

* Requires a LMT DC LED Low Voltage Power Supply and Harness.

68" & 92" Low Voltage LED Under Rail Strip Light w/o Channel



68" Under Rail Strip Light Low Voltage, Dimensions: L: 68" x W: 0.20" x D: 0.10", Connector: 0.5" Diameter, 10" wire lead, Draws 2.25 Watts, Available in 3000 & 5000 Kelvin, 200 Lumens, 102 ea. LED, is cuttable every 2".

* Requires a LMT DC LED Low Voltage Power Supply and Harness.

92" Under Rail Strip Light Low Voltage, Dimensions: L: 92" x W: 0.20" x D: 0.10", Connector: 0.5" Diameter, 10" wire lead, Draws 3.0 Watts, Available in 3000 & 5000 Kelvin, 260 Lumens, 138 ea. LED, is cuttable every 2".

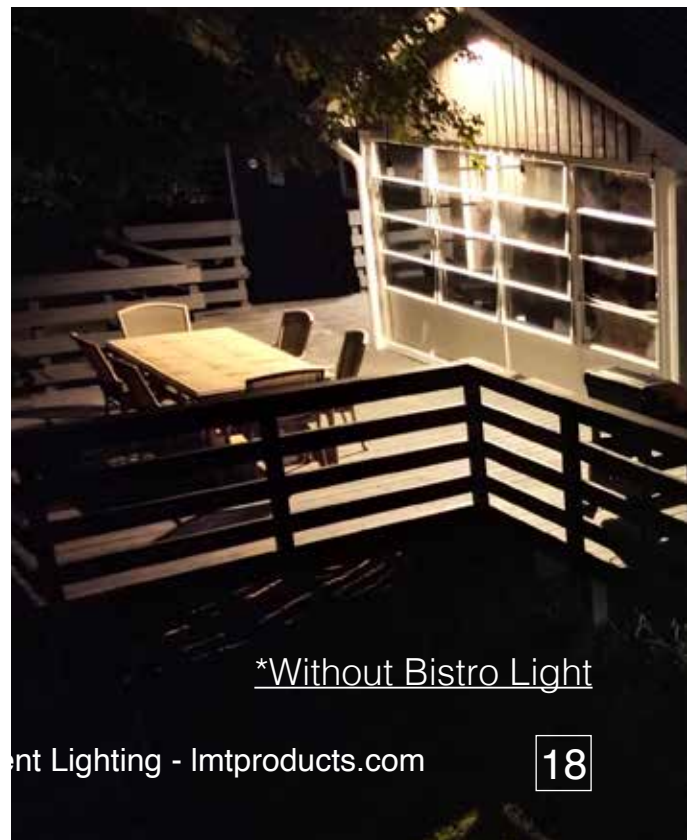
* Requires a LMT DC LED Low Voltage Power Supply and Harness.

Bistro String Light



Dimensions: 8 ea. Shatter Resistant Led Bulbs spaced every 3', L: 24' x D: 1.8" x H: 9.0", Connector: 0.5" Diameter, Draws 6.4 Watts, Available in 3000 & 5000 Kelvin, 400 Lumens.

* Requires a LMT DC LED Low Voltage Power Supply and Harness.



*With Bistro Light

*Without Bistro Light



LMT produces a wide selection of wiring products to make installation quick and easy. Multiple harness lengths and various splitters, allows for simple “plug and play” with no cutting or splicing. We also offer transformers in both 12 and 50 watt configurations that are perfectly matched to power the number of lights in your installation with optional

50 Watt LED Low Voltage Smart Power Supply w/photo eye, timer, remote and Smart Connectivity



50 Watt, 12 Volt DC, 4.2 Amps Programmable Smart Power Supply includes a uniquely paired remote key fob, 4' output wire lead with molded Tee connector, and 5' wired remote photocell. Built in Smart Connectivity controls, LED dimmer, timer (1-8 hours or dusk to dawn), teachable photo eye, and diagnostic troubleshooting modes. Android and iPhone apps available. Add up the total wattage of all the bulbs you will be using. This will give you an estimate of which size lighting transformer you will need. Will power approximately a maximum of 65 each (0.8 Watts) lights. Coming Summer 2023: Added Wi-Fi connectivity which allows users to control lights on/off and dimming via Google Home® or Alexa® voice commands. With Smart Home Integration, users will have the ability to change these settings on multiple power supplies at once. You still retain the freedom to individually control each power supply via Smart Connectivity, remote control or the new Smart Home Integration.

12 Volt/12 Watt Power Supply w/ Photo Eye



12 Watt, 12 Volt DC, 1 AMPs with 9' wire lead with female connector and a TEE connector. Add up the total wattage of all the bulbs you will be using. This will give you an estimate of which size lighting transformer you will need. Will power approximately a maximum of 16 each (0.8 Watts) lights.

Dimmer for 12 Watt LED Low Voltage Power Supply w/ Remote



For Use With 12 Watt Power Supply, Installed Between Transformer and Photo Eye. Includes Remote Control.





LMT produces a wide selection of wiring products to make installation quick and easy. With multiple harness lengths and various splitters, allows for simple “plug and play” with no cutting or splicing. We also offer transformers in both 12 and 50 watt configurations that are perfectly matched to power the number of lights in your installation with optional dimmers and remotes.

2 Output Splitter Low Voltage LED



For Connection From Male Plug To Light, Splitter, Or Harness. Total Length: 7.5”, 1 Female and 2 Male Connectors: 0.50” Diameter

5 Output Splitter Low Voltage LED



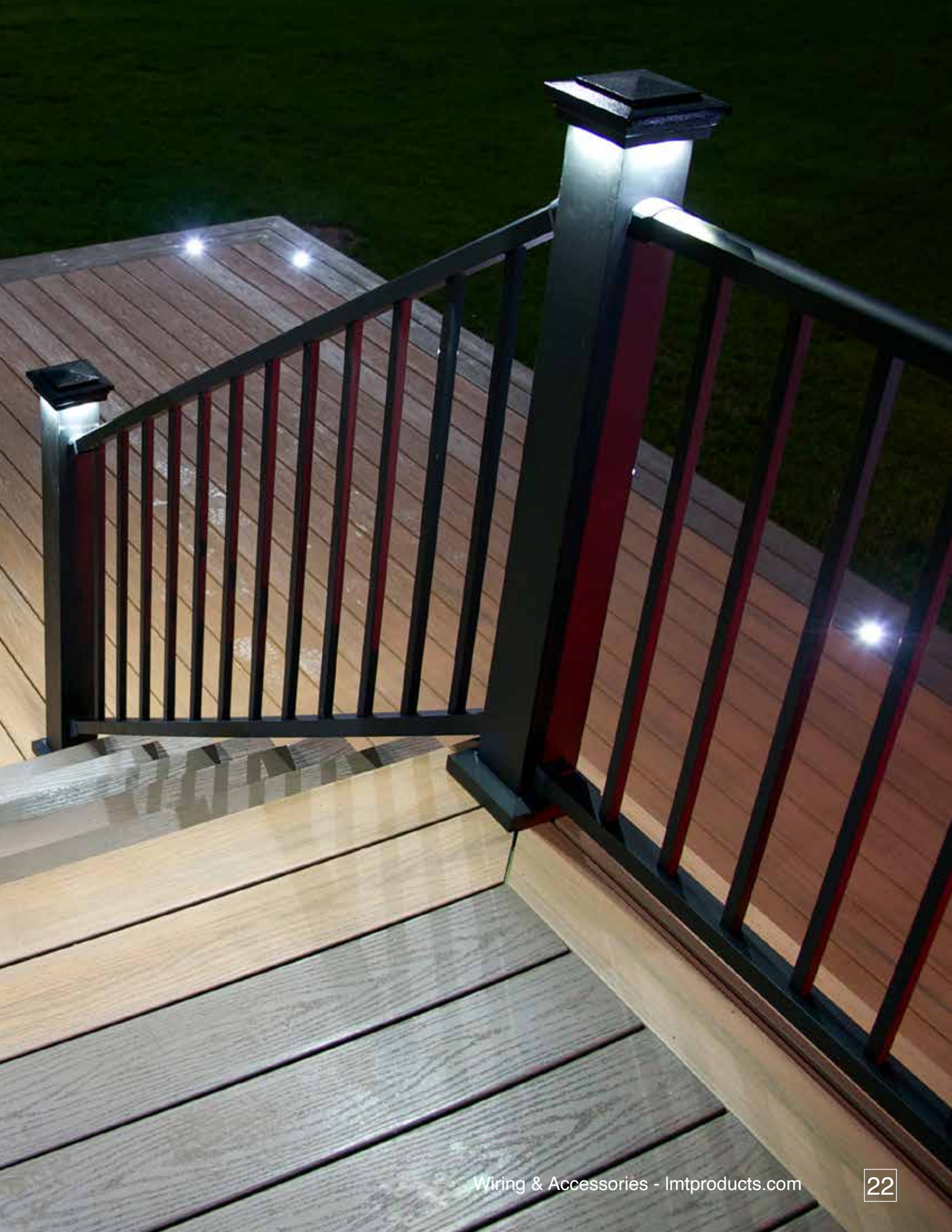
For Connection From Male Plug To Light, Splitter, Or Harness. Total Length: 7.5”, 1 Female and 5 Male Connectors: 0.50” Diameter: 2 Caps For Unused Outputs

Low Voltage LED Harness



For Connection From Male Plug To Light, Splitter, Or Harness., Female and Male Connector: 0.50” Diameter.

SIZES OFFERED | 2', 5', 7', 9', 12', 25'



Our ornamental product line is the perfect accent to your property's deck and fencing. Offered in both low voltage and solar allows flexibility in installation and a variety of applications. With cap sizes from 2" through 5.5", our ornamental line is suited for most post sizes and our accent lights are ideal for stairs and discreet accent lighting on decks.

Ornamental Solar Light Post Cap



*Image depicts 2" cap

STANDARD COLORS



Available in 5000 Kelvin, 3 Lumens
(US Patent # 6,722,637)

SIZES OFFERED | 2", 2.5", 3", 3.25", 3.5", 4"

Solar Ornamental Post Cap with Accessory Connection



*Image depicts 2.5"-4" style(s)

STANDARD COLORS



Will power (2) ea. Solar Accessory Lights

* Requires Accessory Lights and Harness - Sold Separately
(US Patent # 6,722,637)

SIZES OFFERED | 2", 2.5", 3", 3.5", 4"





Our ornamental product line is the perfect accent to your property's deck and fencing. Offered in both low voltage and solar allows flexibility in installation and a variety of applications. With cap sizes from 2" through 5.5", our ornamental line is suited for most post sizes and our accent lights are ideal for stairs and discreet accent lighting on decks.

Ornamental Downward Solar Light Post Cap



*Image depicts 2.5"-4" style(s)

STANDARD COLORS



Available in 5000 Kelvin,
6 Lumens
(US Patent # 6,722,637)

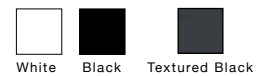
SIZES OFFERED | 2", 2.5", 3", 3.25", 3.5", 4"

Ornamental Solar Light Post Cap



*Image depicts 2.5"-4" style(s)

STANDARD COLORS



Available in 5000 Kelvin,
3 Lumens
(US Patent # 6,722,637)

SIZES OFFERED | 2", 2.5", 3", 3.25", 3.5", 4"



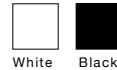


Our ornamental product line is the perfect accent to your property's deck and fencing. Offered in both low voltage and solar allows flexibility in installation and a variety of applications. With cap sizes from 2" through 5.5", our ornamental line is suited for most post sizes and our accent lights are ideal for stairs and discreet accent lighting on decks.

Solar Ornamental Side Light



STANDARD COLORS



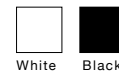
Dimensions: 1.50" x 0.63" x 0.39", 10" wire lead, End Connector: 0.375" Diameter, Contains: Fixture & (2ea.) Screws. 3 Lumens. Available in 5000 kelvin. (US Patent # 6,722,637)

*Requires a Solar Accessory Connection Cap and Solar Harnesses.

Solar Recessed Riser Light



STANDARD COLORS



Product dimensions: Largest Diameter: 1", LED Diameter 0.9"; Overall Height 1.1"; Hole Size Required 0.750", Contains: (1) LED Light with Cover & 24" Lead Wire. End Connector: 0.375" Diameter. For use on Stair and side post applications, 5000 Kelvin , 3 Lumens *Requires a Solar Accessory Connection Cap



Our accent lights are a perfect compliment to stair, under rail or flush deck lighting. These products offer improved safety and visibility, as well as look great in any outdoor living space. Our numerous color options ensure a great match to our other lighting lines.

Solar Stair/Side Light with 2 covers



STANDARD COLORS

DESIGNER FINISHES



Oval dimensions: 1.130" x 3.223", Contains: (1) ea. Lens w/ (3) ea. LED, (1) ea. Half Cover (1) ea. Full Cover, & (2) ea. Screws, w/ 9" lead wire. End Connector: 0.5" Diameter for use on Stair and side post applications, Available in 5000 Kelvin, 3 Lumens. *Requires a Solar Accessory Connection Cap and Solar Harnesses.

Solar Scalloped Dome Side Light & Dome Side Light



STANDARD COLORS

DESIGNER FINISHES



Diameter: 2.75", Height 1.344", (2) ea. LED w/ 24" lead wire. End Connector: 0.375". Diameter & (2) ea. screws, 5000 Kelvin, 6 Lumens *Requires a Solar Accessory Connection Cap and Solar Harnesses.



Our Cape May line is offered in sizes from 3-5/8" through 6" and in four low voltage configurations and five solar versions. There are three lens choices and a downward version in low voltage and two solar lens choices all offered in multiple color options.

Cape May Solar

The Designer Finishes products allows for personal customizing of the post caps using accent colors and textured finishes. There are five Designer colors with textured finishes and four standard colors giving you numerous options to choose from. The Neptune, Cape May and Haven post caps can have different top and lower base (skirt).

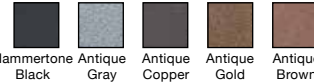


STANDARD COLORS



White Almond Beige Khaki

DESIGNER FINISHES

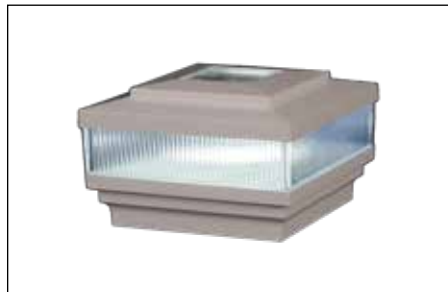


Hammerstone Black Antique Gray Antique Copper Antique Gold Antique Brown

- Cape May Solar: Available in 5000 Kelvin, 3 Lumens.
- Cape May Scalloped Solar: Available in 5000 Kelvin, 3 Lumens.
- Cape May Halo Solar: Available in 5000 Kelvin, 3 Lumens.
- Cape May Downward: Available in 5000 Kelvin, 6 Lumens.
- Cape May Accessory: Will power (2) ea.
- Solar Post Cap | US Patent #6,722,637



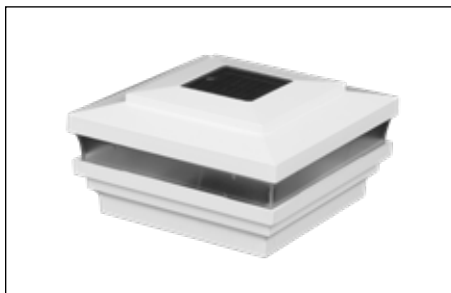
Cape May Solar Post Cap with Accessory Connection



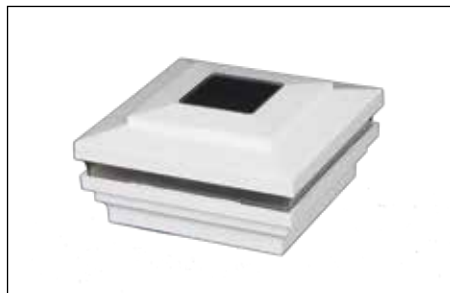
Cape May Scalloped Solar Post Cap Light



Cape May Downward Solar Post Cap Light



Cape May Solar Post Cap Light



Cape May Halo Solar Post Cap Light





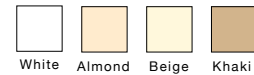
Our Neptune line is offered in sizes from 3-5/8" through 6" and in four low voltage configurations and five solar versions. There are three lens choices and a downward version in low voltage and two solar lens choices all offered in multiple color options.

Neptune Solar



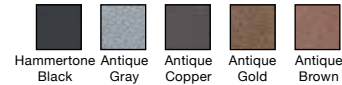
The Designer Finishes products allows for personal customizing of the post caps using accent colors and textured finishes. There are five Designer colors with textured finishes and four standard colors giving you numerous options to choose from.

STANDARD COLORS



White Almond Beige Khaki

DESIGNER FINISHES



Hammertone Black Antique Gray Antique Copper Antique Gold Antique Brown

SIZES OFFERED | 3-5/8", 4", 4-1/2", 5", 5-5/8", 6"

Neptune Solar: Available in 5000 Kelvin, 3 Lumens.

Neptune Scalloped Solar: Available in 5000 Kelvin, 3 Lumens.

Neptune Halo Solar: Available in 5000 Kelvin, 3 Lumens.

Neptune Downward: Available in 5000 Kelvin, 6 Lumens.

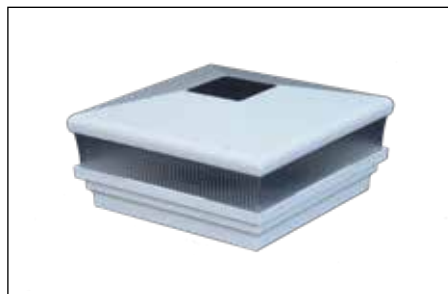
Neptune Accessory Will power (2) ea. Solar Accessory Lights.

*Requires Accessory Lights and Harnesses - Sold separately. Available in 5000 Kelvin, 3 Lumens.

Solar Post Cap | US Patent #6,722,637



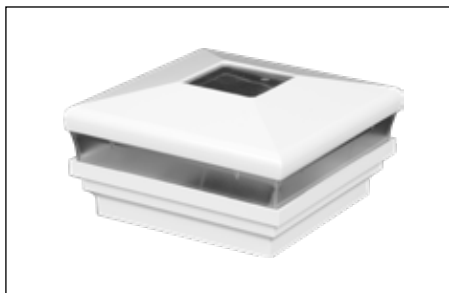
Neptune Solar Post Cap with Accessory Connection



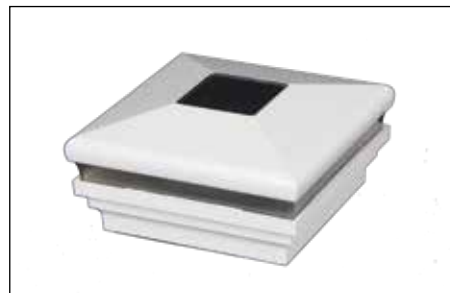
Neptune Scalloped Solar Post Cap Light



Neptune Downward Solar Post Cap Light



Neptune Solar Post Cap Light

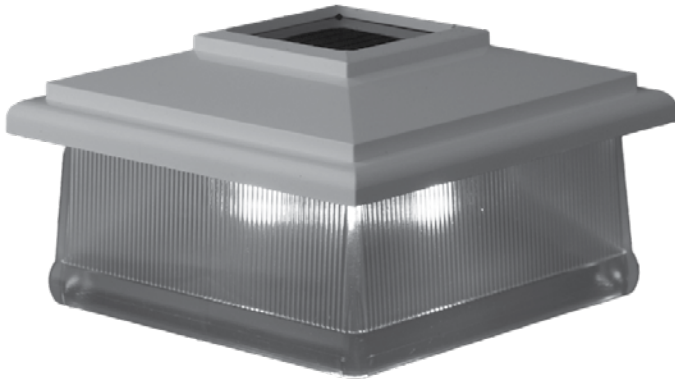


Neptune Halo Solar Post Cap Light





Classic Solar Post Cap Light



STANDARD COLORS



White

Available in 5000 Kelvin, 3 Lumens
(US Patent # 6,722,637)

SIZES OFFERED | 5"

Cambridge Solar Post Cap Light



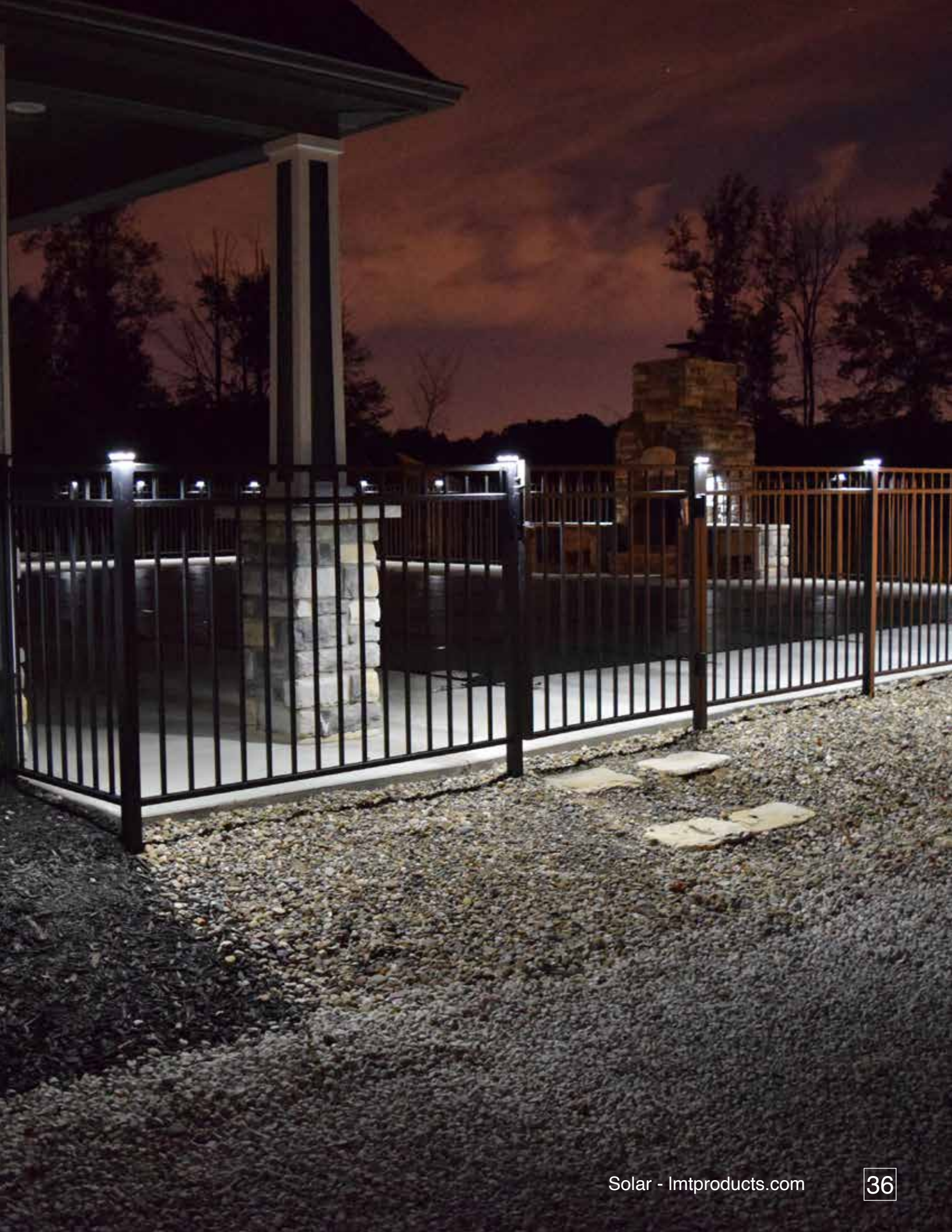
STANDARD COLORS



White

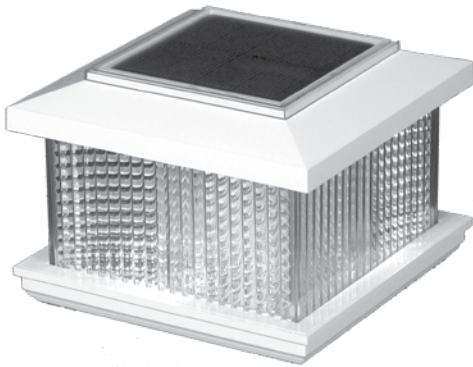
Available in 5000 Kelvin, 3 Lumens
(US Patent # 6,722,637)

SIZES OFFERED | 4", 5"

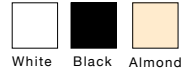


Our accent lights are a perfect compliment to stair, under rail or flush deck lighting. These products offer improved safety and visibility, as well as look great in any outdoor living space. Our numerous color options ensure a great match to our other lighting lines.

Galaxy Solar Post Cap Light



STANDARD COLORS

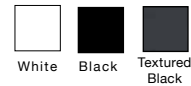


Fits externally over 4" Sq." or 5" Sq. post, 4" Sq. solar panel, 1ea 3.2V LiFePo4 14500 AA 600mAh Rechargeable Battery for Solar Lights. Up to 12 hours of light, includes adapter for use with 4" posts, 9000 Kelvin, 3 Lumens. The brightest in lumens for solar light and with built adapter can work for a 4" or a 5" post.
(US Patent # 6,722,637)

Ornamental Solar Wedge



STANDARD COLORS



Description: 1.25" x 1.95" x 4.8", 4 LEDs, (1)ea 3.2V LiFePo4 600mAh, 5000 Kelvin, 7 Lumens. (U.S. Patent #D553,783)





2-Output Solar Splitter



Solar Harness for Connection From Female Plug to Light, Splitter, or Harness.
Total Length: 7.5", 2 Female and 1 Male Connectors: 0.375" Diameter

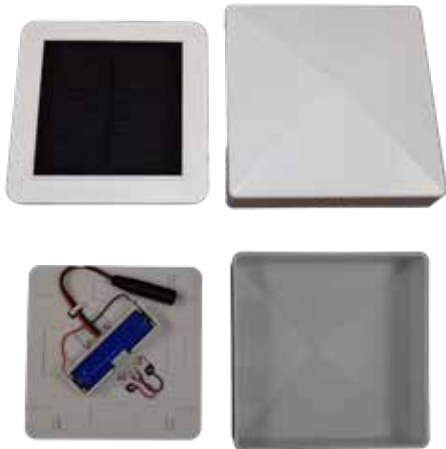
Solar Harness



Solar Harness for Connection From Female Plug to Light or Splitter, or Harness.
Total Length: 24", Male and Female Connector: 0.375" Diameter.

SIZES OFFERED | 2'

Solar Horse Post Cap (Hidden Solar Panel) with Accessory Connection



STANDARD COLORS



White

SIZES OFFERED | 4", 5"

Maximum profile dimensions 4.050" Sq., Corner Radius 0.125", Extends 0.750" over the profile, Total Height: 1.75", End Connector: 0.375" Diameter

Maximum profile dimensions 5.050" Sq., Corner Radius 0.125", Extends 0.930" over the profile, Total Height: 1.75", End Connector: 0.375" Diameter

Can power up to 2 Solar Accessory Lights.

* Requires Accessory Lights and Harness - Sold Separately.

SOLAR POST CAP BATTERY – 4 PACK



3.2V LiFePo4 14500 AA 600mAh Rechargeable Battery for Solar Lights





WHY LMT?

Our mission is to provide contractors and homeowners LED lighting solutions that are easy to install, reliable and affordable while offering unsurpassed customer service. Add safety, security, ambiance and increase enjoyment of your outdoor living space.

Unlike most manufacturers of lighting products, LMT has in house electrical engineers that engineer, design, test and add customer support on all lighting products. All LMT products are proudly designed and assembled in the USA.

Simple and Easy to Install

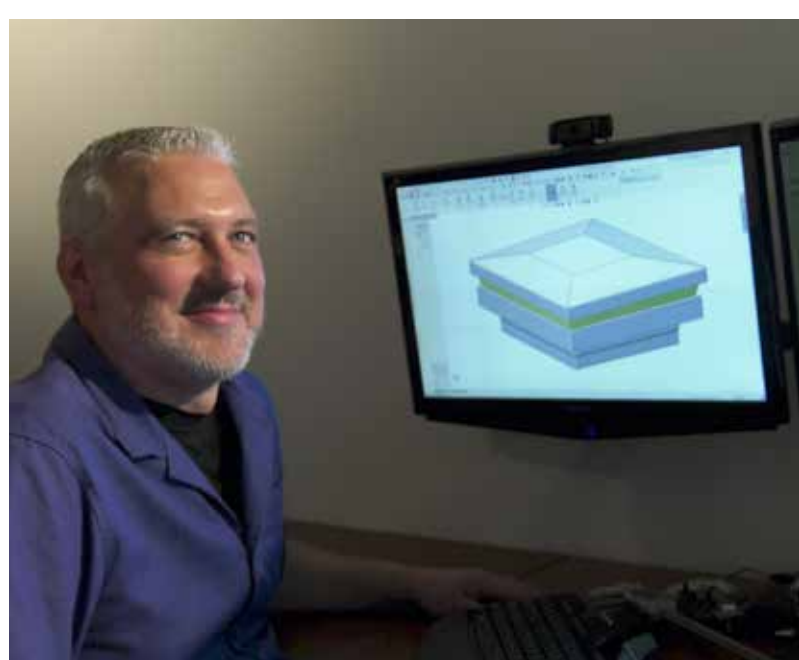
- No wires to cut – plug together wiring harness
- Single power supply for all lights

Long Lasting

- Weather resistant connectors and lights
- Long-lasting LED's rated at 50,000 hours
- Housings are durable and UV stable

Highly Energy Efficient

- Low Voltage DC Power Supply
- Dusk to Dawn light sensor
- Available with remote dimmer switch





Imtproducts.com | 888. 570.5252



Mercer Group, Inc

B-LED1022