

PART #	FINISH	MATERIAL
NW38944Q	BLACK POWDER COAT	ZINC-PLATED STEEL
NW38944SS	MILL	STAINLESS STEEL

		REVISIONS		
ECR/DCR	REV.	DESCRIPTION	DATE	APPD
-	-	INITIAL RELEASE	08-15-08	EET
-	1	ADDED PART # TABLE	05-29-24	DDC

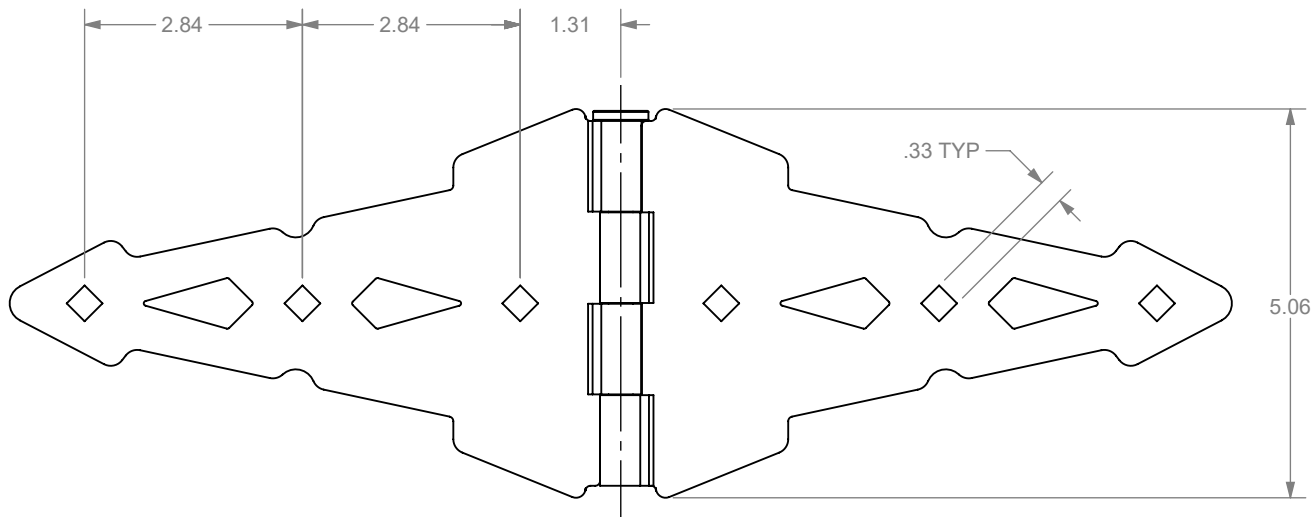
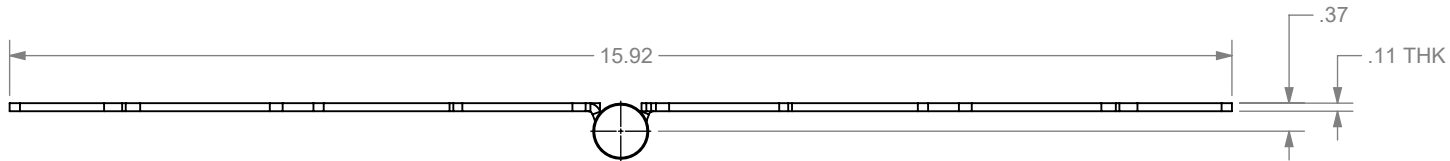
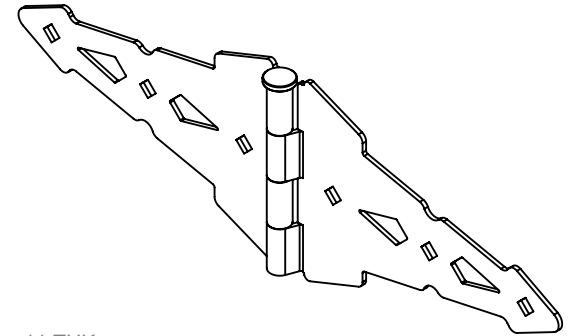
PACKAGING INSTRUCTIONS

POLYBAG CONTAINING:

- (2) HINGE ASSEMBLIES - MATERIAL: SEE TABLE

- POLYBAG CONTAINING:

- (12) 5/16" X 1.75" LAG SCREWS - MATERIAL: SEE TABLE



DIMENSIONS ARE IN INCHES
TOLERANCES:
FRACTIONAL $\pm 1/16"$
ANGULAR: MACH $\pm 1^\circ$ BEND $\pm 1^\circ$
TWO PLACE DECIMAL ± 0.01
THREE PLACE DECIMAL ± 0.005

PROPRIETARY AND CONFIDENTIAL
THE INFORMATION CONTAINED IN THIS DRAWING IS THE SOLE PROPERTY OF NATIONWIDE INDUSTRIES. ANY REPRODUCTION IN PART OR AS A WHOLE WITHOUT THE WRITTEN PERMISSION OF NATIONWIDE INDUSTRIES IS PROHIBITED.

NATIONWIDE INDUSTRIES®

8" CONTEMPORARY DOUBLE STRAP HINGE

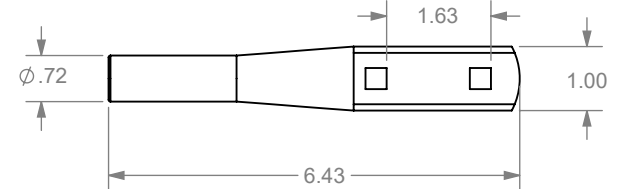
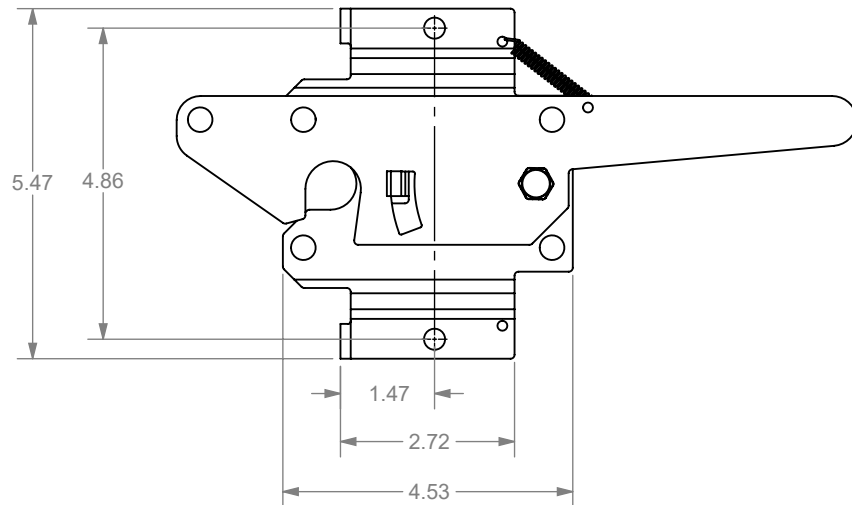
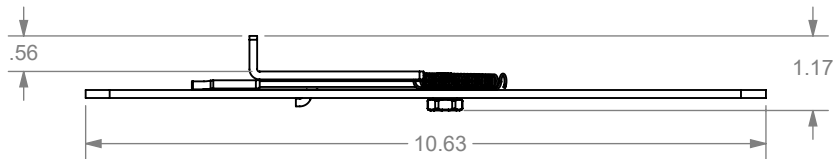
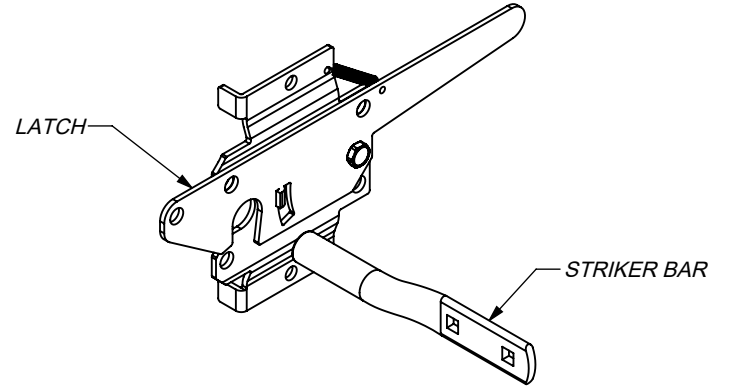
SIZE	DWG. NO.	REV.
A	CS--NW38944	1
SCALE: 2:5	WEIGHT:	SHEET 1 OF 1

PART #	COLOR
NW38308Q	BLACK

ECR/DCR		REV.	REVISIONS	DESCRIPTION	DATE	APPD
-	-	-	INITIAL RELEASE		04-27-07	-
-	-	1	REVISED DRAWING FORMAT		06-04-24	DDC

PACKAGING INSTRUCTIONS

- (1) LATCH
- (1) STRIKER BAR
- POLYBAG CONTAINING:
 - (6) 5/16" X 1-3/4" HEX HD LAG SCREWS - MATERIAL: HDG STEEL



DIMENSIONS ARE IN INCHES
 TOLERANCES:
 FRACTIONAL $\pm 1/16"$
 ANGULAR: MACH $\pm 1^\circ$ BEND $\pm 1^\circ$
 TWO PLACE DECIMAL ± 0.01
 THREE PLACE DECIMAL ± 0.005

PROPRIETARY AND CONFIDENTIAL
 THE INFORMATION CONTAINED IN THIS
 DRAWING IS THE SOLE PROPERTY OF
 NATIONWIDE INDUSTRIES. ANY
 REPRODUCTION IN PART OR AS A WHOLE
 WITHOUT THE WRITTEN PERMISSION OF
 NATIONWIDE INDUSTRIES IS PROHIBITED.

**NATIONWIDE
 INDUSTRIES®**

**STANDARD
 POST LATCH**

SIZE A	DWG. NO. CS--NW38308Q	REV. 1
SCALE: 1:3	WEIGHT:	SHEET 1 OF 1

PART #	COLOR
NW38398Q	BLACK

ECR/DCR		REV.	REVISIONS		DATE	APPD
-	-	-	DESCRIPTION	INITIAL RELEASE	12-19-23	-

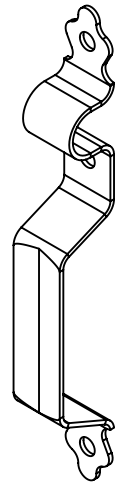
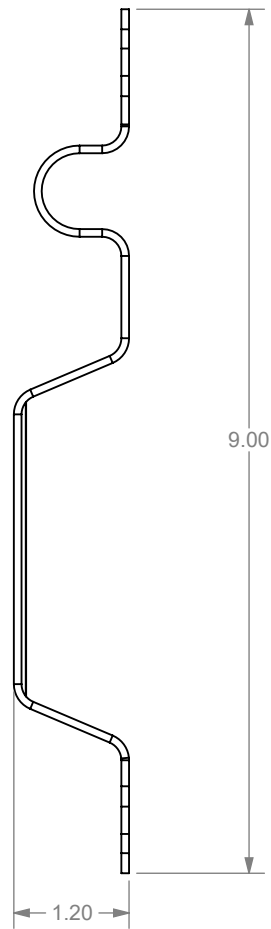
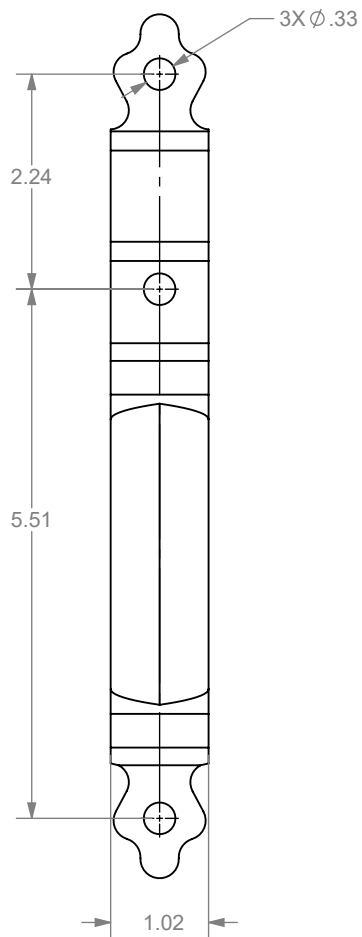
PACKAGING INSTRUCTIONS

POLYBAG CONTAINING:

- (1) GATE HANDLE

- POLYBAG CONTAINING:

(3) #12 X 1.5" PAN HEAD SCREWS - MATERIAL: HDG



DIMENSIONS ARE IN INCHES TOLERANCES: FRACTIONAL $\pm 1/16"$ ANGULAR: MACH $\pm 1^\circ$ BEND $\pm 1^\circ$ TWO PLACE DECIMAL ± 0.01 THREE PLACE DECIMAL ± 0.005		NATIONWIDE INDUSTRIES®	
PROPRIETARY AND CONFIDENTIAL THE INFORMATION CONTAINED IN THIS DRAWING IS THE SOLE PROPERTY OF NATIONWIDE INDUSTRIES. ANY REPRODUCTION IN PART OR AS A WHOLE WITHOUT THE WRITTEN PERMISSION OF NATIONWIDE INDUSTRIES IS PROHIBITED.		STANDARD GATE HANDLE	
SIZE A DWG. NO. CS--NW38398Q SCALE: 1:2	REV. - WEIGHT:	SHEET 1 OF 1	