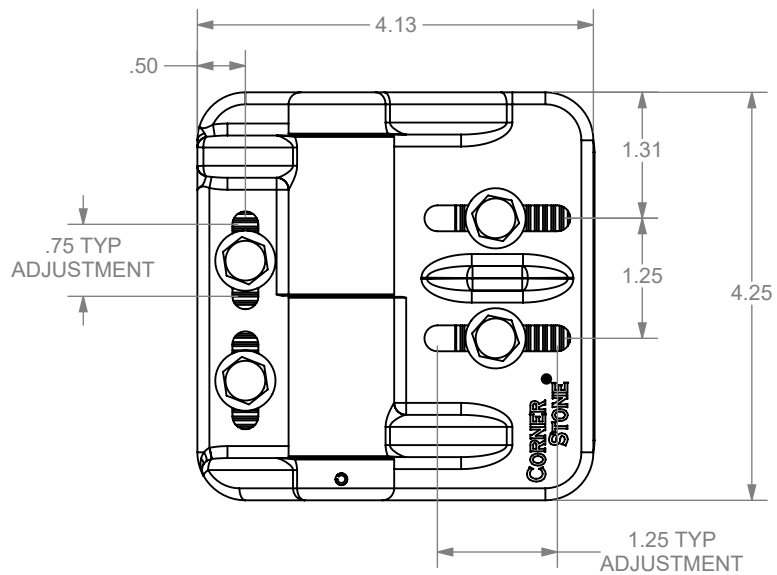
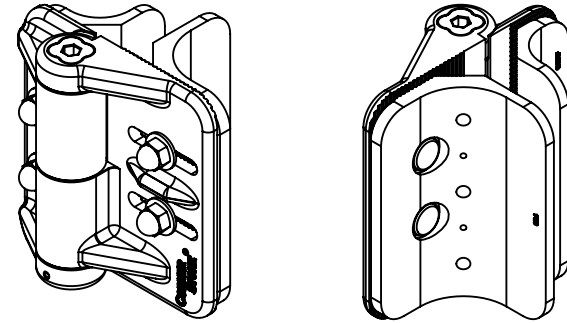
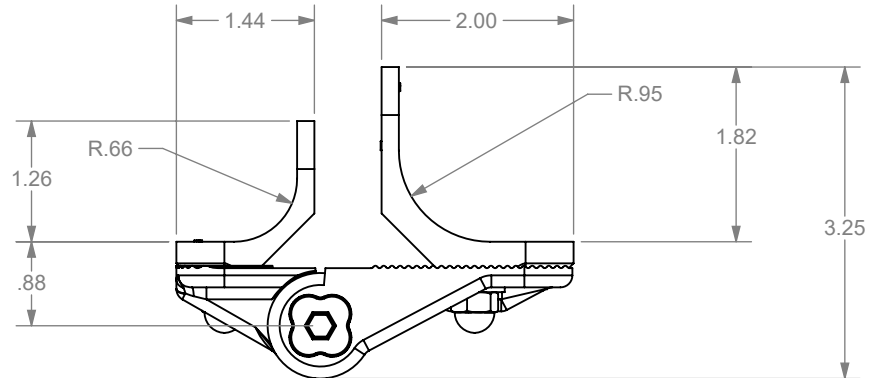


PART #	COLOR
CH200FR-BK	BLACK

ECR/DCR		REV.	REVISIONS	DESCRIPTION	DATE	APPD
-	-	-	INITIAL RELEASE		05-29-24	-



PACKAGING INSTRUCTIONS

POLYBAG CONTAINING:

- (2) HINGE ASSEMBLIES
- (2) GATE SIDE BACK PLATES
- (2) POST SIDE BACK PLATES
- (2) GATE SHIMS - 1-5/8"
- (2) FENCE SHIMS - 2-3/8"
- (2) FENCE SHIMS - 2-5/8"
- (2) FENCE SHIMS - 2-7/8"
- (1) INSTRUCTION SHEET
- (1) WARRANTY SHEET

POLYBAG CONTAINING:

- (1) ADJUSTMENT WRENCH
- (8) 1/4" WASHERS
- (8) 1/4"-20 ACORN NUTS
- (12) #10 X 1.25" HEX WASHER HD SD SCREWS

MATERIAL: ZINC-PLATED STEEL

DIMENSIONS ARE IN INCHES
 TOLERANCES:
 FRACTIONAL $\pm 1/16"$
 ANGULAR: MACH $\pm 1^\circ$ BEND $\pm 1^\circ$
 TWO PLACE DECIMAL ± 0.01
 THREE PLACE DECIMAL ± 0.005

PROPRIETARY AND CONFIDENTIAL
 THE INFORMATION CONTAINED IN THIS
 DRAWING IS THE SOLE PROPERTY OF
 NATIONWIDE INDUSTRIES. ANY
 REPRODUCTION IN PART OR AS A WHOLE
 WITHOUT THE WRITTEN PERMISSION OF
 NATIONWIDE INDUSTRIES IS PROHIBITED.

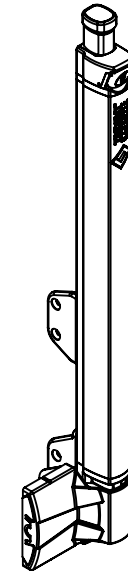
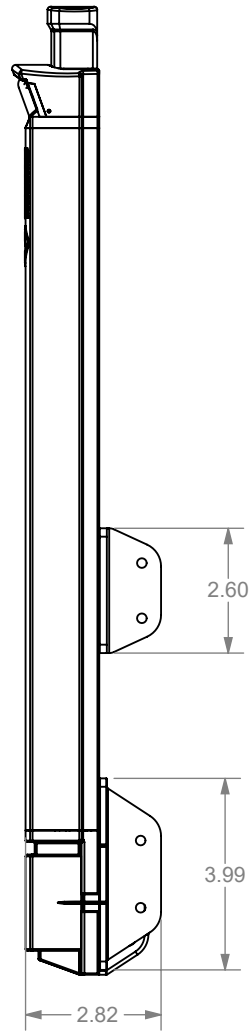
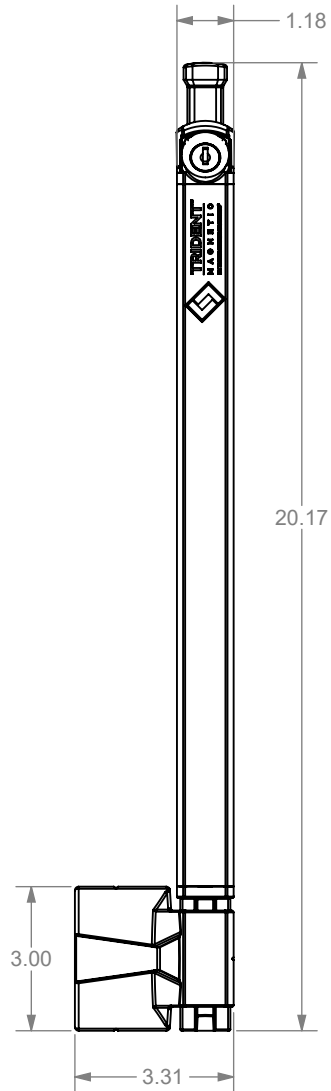
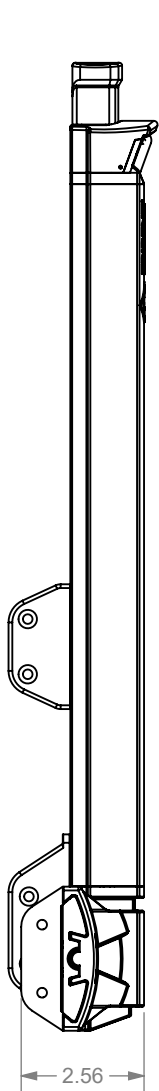
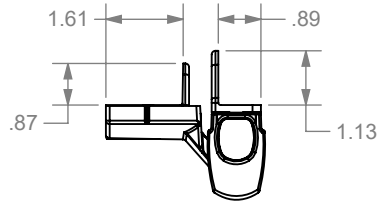
**NATIONWIDE
 INDUSTRIES®**

**SELF-CLOSING
 ADJUSTABLE HINGE
 FOR ROUND POSTS**

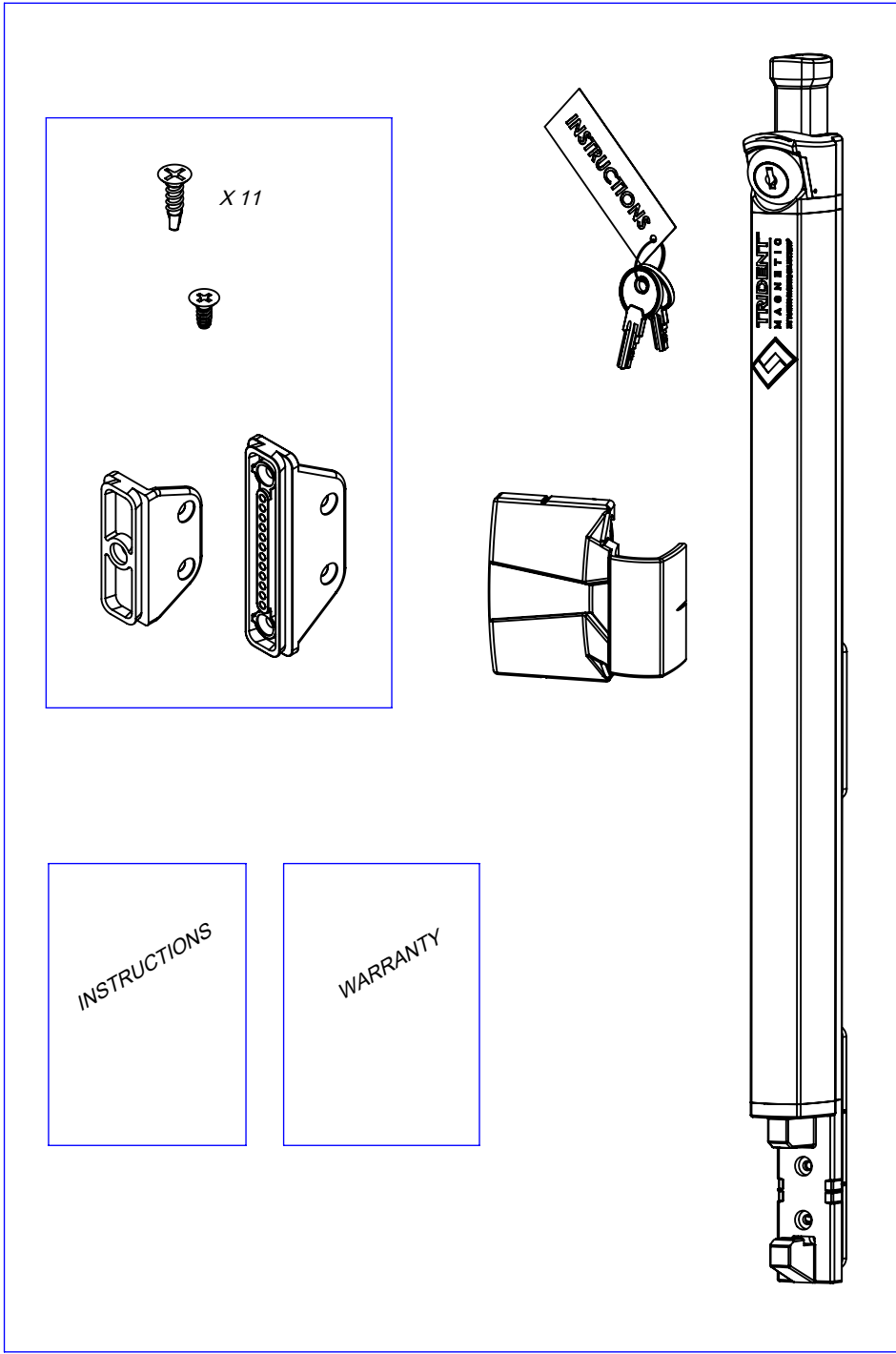
SIZE A	DWG. NO. CS--CH200FR	REV. -
SCALE: 1:2	WEIGHT:	SHEET 1 OF 1

PART #	COLOR
TRIDENT20-BK	BLACK
TRIDENT20-WH	WHITE

		REVISIONS		
ECR/DCR	REV.	DESCRIPTION	DATE	APPD
-	-	INITIAL RELEASE	08-01-13	-
-	1	REVISED KEEPER MAGNET COVER AND DATE INSERT	05-05-14	-
-	2	UPDATED CS TEMPLATE	05-28-24	-



DIMENSIONS ARE IN INCHES TOLERANCES: FRACTIONAL $\pm 1/16"$ ANGULAR: MACH $\pm 1^\circ$ BEND $\pm 1^\circ$ TWO PLACE DECIMAL ± 0.01 THREE PLACE DECIMAL ± 0.005		NATIONWIDE INDUSTRIES®	
PROPRIETARY AND CONFIDENTIAL THE INFORMATION CONTAINED IN THIS DRAWING IS THE SOLE PROPERTY OF NATIONWIDE INDUSTRIES. ANY REPRODUCTION IN PART OR AS A WHOLE WITHOUT THE WRITTEN PERMISSION OF NATIONWIDE INDUSTRIES IS PROHIBITED.		TOP PULL LATCH	
SIZE A DWG. NO. CS--TRIDENT20 SCALE: 1:4 WEIGHT:	REV. 2 SHEET 1 OF 2		



PACKAGING INSTRUCTIONS

PRINTED POLYBAG CONTAINING:

- (1) TOP PULL LATCH ASSEMBLY WITH KEYS (WITH KEY TAG)
- (1) STRIKER ASSEMBLY
- (1) INSTRUCTION SHEET
- (1) WARRANTY SHEET

- POLYBAG CONTAINING:

- (1) UPPER MOUNTING BRACKET
- (1) LOWER MOUNTING BRACKET
- (11) #10 X .75" FLAT HD PHILLIPS SELF- DRILLING SCREWS - MATERIAL: 18-8 SS
- (1) #8 X .38" FLAT HD PHILLIPS SCREW - MATERIAL: 18-8 SS

<p>PROPRIETARY AND CONFIDENTIAL</p> <p>THE INFORMATION CONTAINED IN THIS DRAWING IS THE SOLE PROPERTY OF NATIONWIDE INDUSTRIES. ANY REPRODUCTION IN PART OR AS A WHOLE WITHOUT THE WRITTEN PERMISSION OF NATIONWIDE INDUSTRIES IS PROHIBITED.</p>		<p>TOP PULL LATCH</p>	
<p>SIZE A</p>	<p>DWG. NO. CS--TRIDENT20</p>	<p>REV. 2</p>	<p>SCALE:1:3 WEIGHT: SHEET 2 OF 2</p>