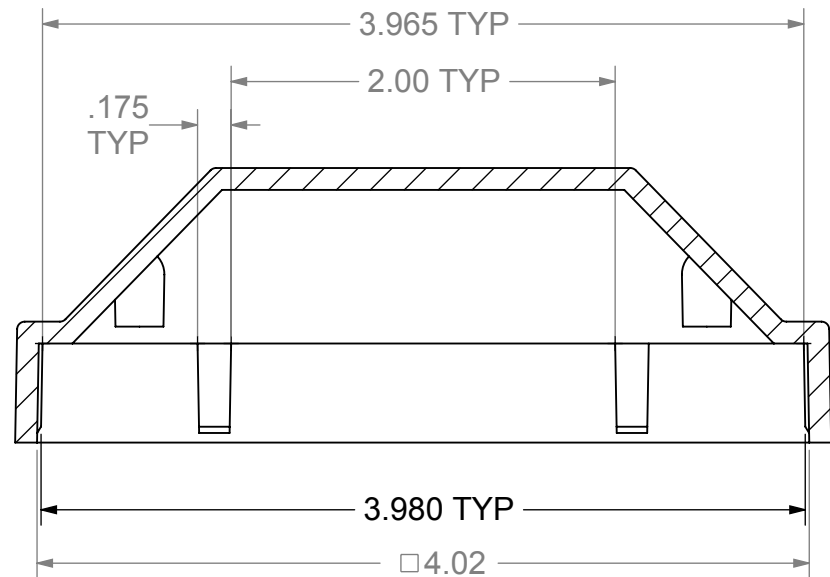
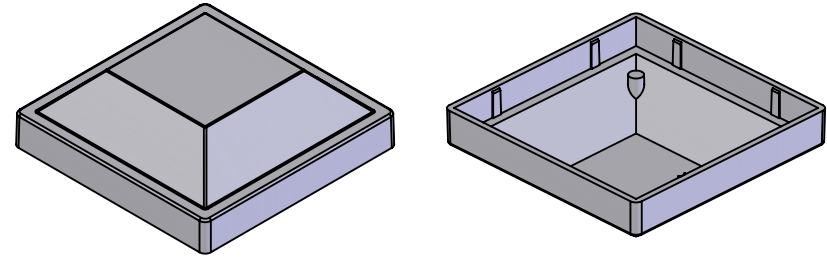
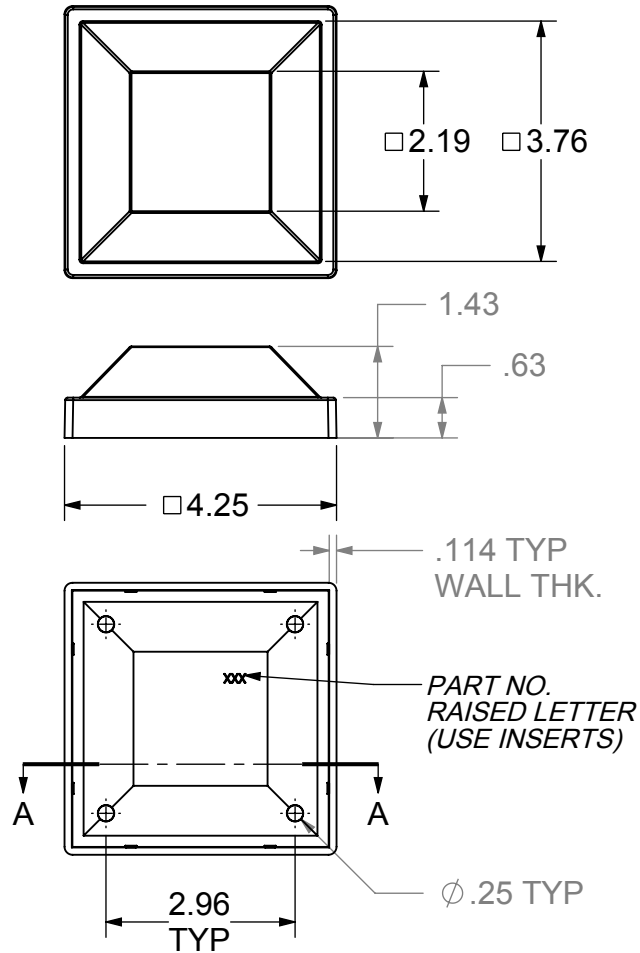


PART #	COLOR	L	a	b	G
NW6084-WH	WHITE	94.5	-1.4	1.5	80
NW6084-BZ	"BZ" BRONZE	34	.53	2.1	15
NW6084-BK	BLACK	24	0	0	35
NW6084-BZ2	"BZ2" BRONZE	36.4	.74	3.53	58.2
NW6084-MI	SANDBLAST/MILL	na	na	na	na

ECR/DCR		REV.	REVISIONS		DATE	APPD
			DESCRIPTION			
-	-		-		-	-



SECTION A-A
SCALE 1 : 1

NOTES:

- PART TO HAVE A NON-ABRASIVE FINISH.
- PART TO HAVE MIN. DRAFT ANGLE AS TOOLING REQUIRES.
- ANY AND ALL CHANGES TO MATERIAL OR FINISH MUST BE APPROVED BY NWI.
- ALL DIAMETERS TO BE CONCENTRIC WITHIN .005 UNLESS OTHERWISE SPECIFIED.
- ALL CORNERS TO BE .015 MAX R OR CHAMFER OR OTHERWISE NOTED.
- ALL DIMENSIONS ARE FINISHED PART DIMENSIONS.
- POWDERCOAT FINISH TO BE INTERPON 600 OR NWI APPROVED EQUIVALENT.
- PART VOLUME: 3.51 CU. IN.
- NO FLASH ALLOWED.

DIMENSIONS ARE IN INCHES
TOLERANCES:
FRACTIONAL: ±1/16"
ANGULAR: ±MACH ±1° BEND ±1°
TWO PLACE DECIMAL: ±0.01
THREE PLACE DECIMAL: ±0.005

MATERIAL:
A360 ALUMINUM

FINISH:
SEE CHART

DO NOT SCALE DRAWING

	NAME	DATE
DRAWN	EET	9-26-12
CHECKED		
ENG APPR.		
MFG APPR.		
Q.A.		
COMMENTS:		



**4" ALUMINUM
PRESS FIT
POST CAP**

SIZE	DWG. NO.	REV.
A	NW6084	-
SCALE: 1:3	WEIGHT: 0.84 LB.	SHEET 1 OF 1

PROPRIETARY AND CONFIDENTIAL
THE INFORMATION CONTAINED IN THIS DRAWING IS THE SOLE PROPERTY OF NATIONWIDE INDUSTRIES. ANY REPRODUCTION IN PART OR AS A WHOLE WITHOUT THE WRITTEN PERMISSION OF NATIONWIDE INDUSTRIES IS PROHIBITED.